

THE **FREE** WESSEX ARTS AND CULTURE GUIDE

EVOLVER

July and August 2019



Tincleton Gallery

contemporary fine art in Dorset

Summer Colours

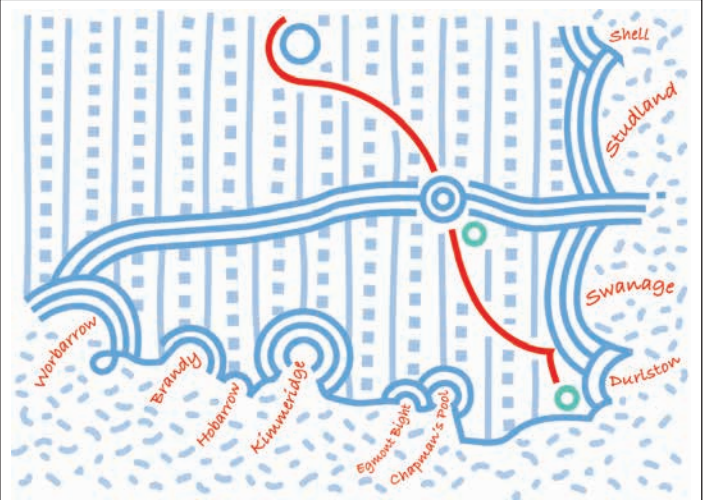
gallery and guest artists

Fri 12th July – Sat 17th August



"Showing Off 2" by Ken Nemar

The Old School House, Tincleton, near Dorchester, DT2 8QR
Friday / Saturday / Sunday / Monday • 10am – 5pm
01305 848909 • www.tinctongallery.com



TEN BAYS Boilerhouse Gallery at DURLSTON

*An exploration of the Purbeck coastline
by Boilerhouse artists and guests*

WEDNESDAY 24 JULY - SUNDAY 11 AUGUST

The Fine Foundation Gallery, Durlston, Swanage, Dorset
Open daily 10am - 4.30pm

The gallery at Corfe Castle is open 10am - 5pm every day,
except Sunday, throughout the summer

Beyond

DIANE MACLEAN

14 JUNE - 29 SEPTEMBER 2019

Drop in art tours on

19 June	14:00
27 June	14:00
9 July	14:00
16 July	11:00
23 July	11:00
29 July	11:00
3 August	11:00
5 August	14:00
9 August	14:00
15 August	11:00
24 August	14:00
30 August	11:00

Salisbury
Cathedral

salisburycathedral.org.uk

#Beyond



EVOLVER 112

EXHIBIT A



PAUL NEWMAN: 'UNDER THE OATH TREE'

Graphite on Bristol Board (25 x 30 cm, 2018)

ARTIST'S STATEMENT: "A response to the Tolpuddle Sycamore, under which the Martyrs met. It is a story passed down through my family, from my grandfather telling me about the struggles of the Martyrs to my father taking me to see the tree. A tree as witness, document and storyteller, events entwined and embedded in its growth."

'DRAWING ON DORSET'

5 - 17 July: The Fine Foundation Gallery, Durlston Country Park, SWANAGE, BH19 2JL. 10am - 5pm. dorsetvisualarts.org.

paulnewmanartist.com

EVOLVER

THE WESSEX ARTS AND CULTURE GUIDE

Editor SIMON BARBER

Assisted by SUZY RUSHBROOK

Evolver Writer

FIONA ROBINSON www.fionarobinson.com

Graphic Design SIMON BARBER

Website OLIVER CONINGHAM at AZTEC MEDIA

Front Cover

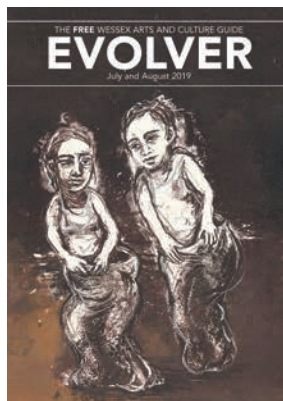
DEBBIE LEE: 'SACK RACE'

(Monoprint)

Evolver Prize 2019 Winner

EVOLVER MEDIA

8 BUCKLAND ROAD, PEN MILL TRADING ESTATE,
YEOVIL, SOMERSET BA21 5EA



Email simon@evolver.org.uk

Telephone 01935 808441

Website evolver.org.uk

Instagram [evolvermagazine](https://www.instagram.com/evolvermagazine)

Twitter @SimonEvolver

Facebook [facebook.com/EvolverMagazine](https://www.facebook.com/EvolverMagazine)

Published by EVOLVER MEDIA LIMITED

Pre-Press by FLAYDEMOUSE

01935 479453 / flaydemouse.com

Printed by STEPHENS & GEORGE

Distributed by ACOUSTIC

07456 009377 / everett190@btinternet.com

DEADLINE FOR EVOLVER 113

September and October 2019

WEDNESDAY 7 AUGUST

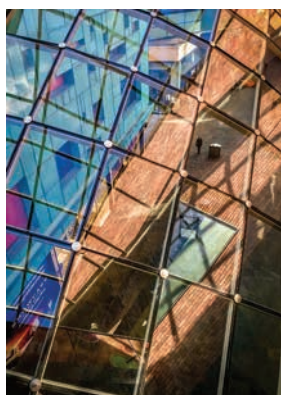
EVOLVER PRIZE 2019

TOP 50

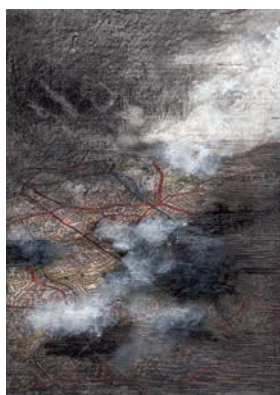


Winner
DEBBIE LEE
Sack Race

EVOLVER PRIZE 2019



ALEX KENNEDY
The Sunday Morning Shopper



ANDREW DAVEY
Apex



ANNA WEBB
The Wall



ANNIE WARD
Bridge



BARBARA ROLL
Relaxing Chair



BRIAN RICE
Waculgar



BRYAN LAVELLE
Tipping Point #1



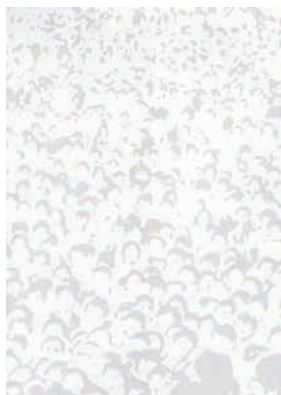
CHRIS DUNSEATH
Hinton Oak with Cern Plan



CLAIRE GLADSTONE
Lino Rocks! 1



CLAIRE GLADSTONE
Lino Rocks! 2



CLIVE BIRNIE
The Ghosts of Tiananmen Square



DAVID BROOKE
A Flight of Fancy



DAVID BROWNING
Decay of 1,000 Years



DAVID SMITH
A Few Lines of Magic for Simon



DAVID SMITH
Colourful Black Square 19



DEBBIE LEE
Sack Race



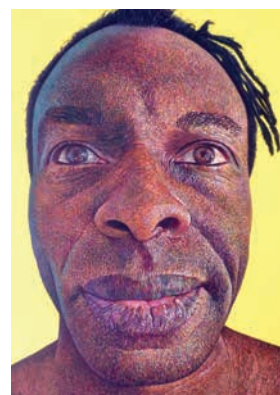
ESME LLOYD
Type #1



FIONA HINGSTON
Home



FIONA SHAW
City Scape 7



GEOFF SHILLITO
Head on Yellow

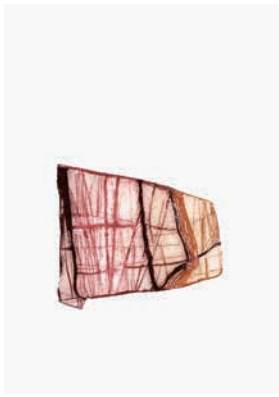
THE SELECTORS

SIMON BARBER (Editor, Evolver) • ADRIAN BOOT (Photographer) • DR FRAN NORTON (Artist / Educator)

EVOLVER PRIZE 2019



GINA MARSHALL
Corfe Castle



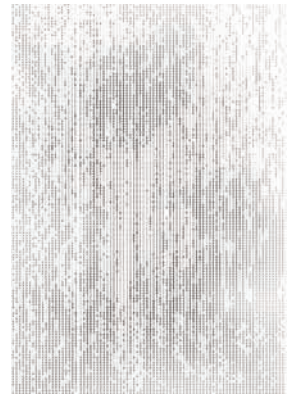
HELEN BRASHER
Coast Walk 1



HENNY BURNETT
Carolina House



JACOB BODILLY
Chamber



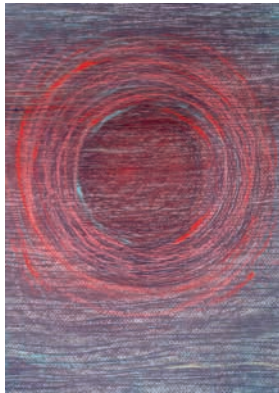
KATHERINE TAYLOR
Human Error



KEITH ROGERS
Sound Waves



KEITH SMITH
Beneath



LOUISE TUNNARD
Dissolving Form



LUCAS WESCHKE
Man with Fish



LYNDA RUTH BROWN
Landwork 2 Golden Cap



Thelma
Hulbert
Gallery

Evolver Prize 2019

6 July - 31 August 2019



EVOLVER
THE WESSEX ARTS AND CULTURE GUIDE

Thelma Hulbert Gallery, Elmfield House,
Dowell St, Honiton, Devon, EX14 1LX
01404 45006 info@thelmahulbert.com www.thelmahulbert.com

Open: Tues - Sat 10am - 5pm | Free Admission, Donations welcome

EVOLVER PRIZE 2019



MARK BROOKES
Mask



MICHAEL COPSEY
Glass Head



NOAH WARNES
Skull Series - 1



PAULINE PEARCE
Marblelous



PRUDENCE MALTBY
Glad Eye



REBECCA LISLE
Snow Fall on Cedars



REMY LLOYD
Aspirateur Extreme



RICHARD SERCOMBE
Portrait of Frank Hornby



RODNEY MCFALL
In Search of the Colossal Squid



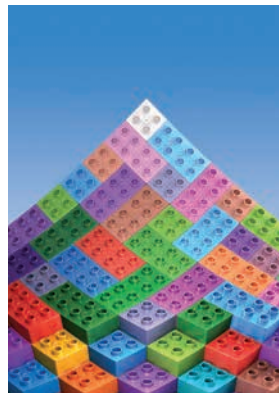
SHARON JAMES
Playa



STEPHANIE MAX
Plastic World #2



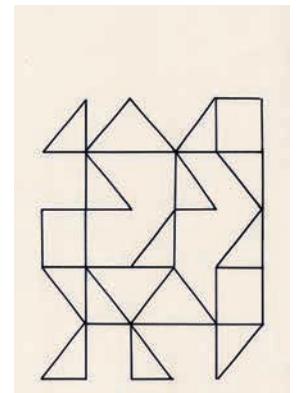
STEVEN MARSHALL
Very Them



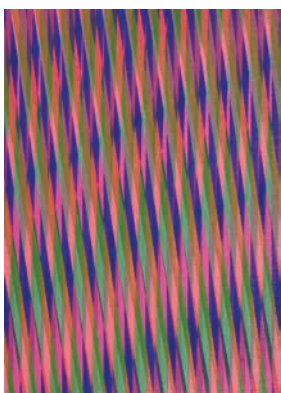
TIM DUKE
Mont Plastique



TIM MOUNT
Aftermath



TONY MARTIN
Kinsol C



VICTORIA MARDON
Sunbeams



YVONNE MORTON
Field



ZARA MCQUEEN
As The Crow Flies (detail)



ZOE BARKER
Horse



ZOE BARKER
Wallpaper

VISUAL ARTS

July and August 2019



LIZ NICOL 'THIEPVAL' (Gelatin silver print, 2019)

WHERE FUNCTION ENDS

To mark the 150th anniversary of the birth of Sir Edwin Lutyens (1869 - 1944), Hestercombe Gallery presents new work by three artists that responds to the legacy of the man whose designs transformed the Hestercombe site. The Formal Garden at Hestercombe, built for the Portman family between 1904 and 1908, is one of the finest and most ambitious examples of Lutyens' garden design partnership with Gertrude Jekyll.

Artist in residence Oliver Sutherland has been recording this garden and holding conversations with members of the gardening team at Hestercombe throughout 2018 and 2019. In a moving image work that layers performance, sound and written narratives, Sutherland explores the Formal Garden as a technological space, akin to the simulated spaces found in the worlds of films and gaming, but only obtainable through excessive labour.

Lutyens and Jekyll's scheme for Hestercombe deployed a design language they developed from the Arts and Crafts tradition, but with its striking geometry and the imposing Orangery - Lutyens' first

entirely classical building - signals the direction Lutyens' architecture was to take in the 20th century.

An installation by internationally-renowned artist Alex Hartley will explore the contested relationship between Lutyens' architecture and Modernism, the dominant architectural language of the mid 20th century. As part of his series *The Houses*, Hartley will create new works for Hestercombe, depicting iconic British Modernist houses. These will be shown alongside items from the Hestercombe archive, original drawings by Lutyens on loan from the Royal Institute of British Architects and Drawing Matter, and photographs by Gertrude Jekyll.

Photographer Liz Nicol has developed her ongoing research into acts of commemoration by making a body of work about Lutyens' designs for the Imperial (now Commonwealth) War Graves Commission. The Commission was set up during the First World War to deal with the scale of the losses during that conflict and the collective need to recover, bury and commemorate the dead. Lutyens, in consultation with Jekyll, was a key force in

establishing the design language for the war cemeteries and memorials that were constructed along the Western Front and all over the world. Nicol has visited the cemeteries designed by Lutyens and his *Memorial to the Missing of the Somme* at Thiepval, and explored the ways in which he developed his 'elemental mode', inspired by the orders and rules of Classical architecture, to articulate private and public acts of remembrance on a monumental scale.

Curator Kate Best said: "This exhibition brings together the work of three outstanding artists with a group of Lutyens' original sketches and plans, including some of those for Hestercombe, to explore his architecture at Hestercombe and beyond. The 150th anniversary of Lutyens' birth marks the perfect point for us to look at Hestercombe's rich history in a wider context and consider Lutyens' work afresh through the eyes of contemporary artists."

14 July - 27 October: Hestercombe Gallery, Hestercombe Gardens, Cheddton Road, CHEDDON FITZPAINE, near Taunton, TA2 8LG. 11am - 5pm. 01823 410131 / hestercombe.com.

VISUAL ARTS

KEVIN JONES: 'FREE STRUCTURE'

Until 1 July

Meeting Room, Wells & Mendip Museum, Cathedral Green, WELLS, BA5 2UE. Monday - Saturday 10am - 5pm. £3. 01749 673477. "Line, space and colour combine to create these very original, free structured artworks."

'MASTERS OF INVENTION'

Until 7 July

Devon Guild of Craftsmen, Riverside Mill, BOVEY TRACEY, Devon, TQ13 9AF. 10am - 5.30pm. 01626 832223 / crafts.org.uk. "Challenging perceptions of graffiti writing culture, whilst expanding traditional definitions of art, craft and design, this bold exhibition by leading UK and European artists explores the evolution of graffiti art."

ALAN DAVIE

Until 7 July

Tincton Gallery, TINCLETON, Dorchester, DT2 8QR. Friday - Monday 10am - 5pm. 01305 848909 / tinctongallery.com.

'COLOURS OF DORSET'

Until 7 July

Eype Centre for the Arts, St Peter's Chapel, Mount Lane, EYPE, Bridport, DT6 6AT. 10am - 5pm. 07958 756368 / eypechurcharts.co.uk. "A third annual exhibition of uniquely colourful and inspiring paintings by Caroline Liddington and Lynne Grace. Highly original, large and small paintings of the ocean, and intriguing interior and exterior landscapes."



MIKE SERVICE: 'STILL LIVES AND THE CARIBBEAN'

Until 12 July

David Simon Contemporary, 37 High Street, CASTLE CARY, BA7 7AP. davidsimoncontemporary.com.

"Following a recent trip to the Grenadines, Mike Service is showing oil paintings of the Caribbean alongside still lifes painted with palette knife."

Above: 'Houses and Boats, Barbados'



MICHELLE GRIFFITHS 'FOCUS ON SANITY' (Oil on canvas, 117 x 137 cm)

GROUP 7: COLOUR VALUES

"Group 7 are Brian Bishop, Martyn Brewster, Bonnie Brown, Fran Donovan, Michelle Griffiths, Ursula Leach and Peter Symonds, a collective of seven artists who have been engaged in research and practical exploration of colour over a substantial period of time. Although their work is different the artists share some common thoughts on the use and importance of colour, including memory, emotion, feelings, mood, expression and evocation as well as the formal functions of colour."

Until 20 July: ACE Arts, Market Place, SOMERTON, TA11 7NB. Tuesday - Saturday 10am - 5pm. 01458 273008 / acearts.co.uk.

'BORDERLINES'

Until 13 July

Andrew Brownsword Gallery, The Edge, University of Bath, Claverton Down, BATH, BA2 7AY. Tuesday - Saturday 11am - 5pm. 01225 386777 / edgearts.org. "Borderline gives form to the conceptual, geo-political, economic and cultural impacts of borders."

'INSATIABLE MIND'

Until 13 July

Salisbury Arts Centre, Bedwin Street, SALISBURY, SP1 3UT. 10am - 3pm. 01722 320333 / wiltshirecreative.co.uk. "Insatiable Mind is inspired by human curiosity and the urge to challenge accepted norms, featuring work from an international selection of artists."

LINDA FELCEY AND DEBBIE LUSH: 'COUNTRY WALK'

Until 13 July

Hybrid Gallery, 51 High Street, HONITON, EX14 1PW. Tuesday - Saturday 10am - 5pm. hybrid-devon.co.uk. "Paintings diversely inspired by walking and observing seasonal changes in the countryside."

Igniting
Contemporary artists
Fred Cuming RA
Vanessa Gardiner
Janette Kerr RWA RSA Hon
Richard Batterham pottery
SLADERS YARD

Sight:
inspired by JMW Turner
Luke Elwes
Frances Hatch
Alex Lowery 6 July - 8 September
Petter Southall furniture
West Bay t: 01308 459511 Open every day.
sladersyard.co.uk Follow us @sladersyard

SUMMER SHOWCASE

3rd to 28th July

Introducing the work of a wide range of local artists and makers here at the Philip Goulden Gallery at Walford Mill

walfordmill
crafts A CONTEMPORARY CRAFT VENUE
IN WIMBORNE SHOW CASING
LOCAL AND NATIONAL MAKERS

WALFORD MILL CRAFTS
Knobcrook Road, Wimborne,
Dorset, BH21 1NL
www.walfordmillcrafts.co.uk
01202 841400

VISUAL ARTS



DORSET MOON

It has travelled all over the world and wowed thousands. Now Luke Jerram's internationally acclaimed *Museum of the Moon* is making its way to Dorset for the first time as part of *Dorset Moon*, the exciting new arts event for summer 2019. This stunning illuminated sculpture created using high-definition NASA imagery of the moon's surface will land in Bournemouth, Sherborne and Weymouth. Inside out Dorset, b-side and Bournemouth Arts By the Sea present Luke Jerram's *Museum of the Moon* as the centrepiece for three fantastic lunar-inspired events across Dorset. Dorset Moon is commissioned by the Arts Development Company with funding from European Regional Development Fund and Arts Council England.

5 - 7 July: Sherborne Abbey, SHERBORNE, DT9 3LQ.

12 - 14 July: Nothe Fort, Barrack Road, WEYMOUTH, DT4 8UF.
dorsetmoon.com

ILMINSTER
arts centre
AT THE MEETING HOUSE

★ ART ★ MUSIC ★
CRAFTS ★ CAFE
www.themeetinghouse.org.uk

ILMINSTER OPEN EXHIBITION 2019 Sponsored by Branton
1 - 26 JULY • Annual showcase of West Country art
CREATIVE COVERAGE
29 JULY - 24 AUGUST • Paintings and sculpture



RA Summer Exhibition 2019
'Painting No. 204'

Clive Melbourne

clive.melbourne@btinternet.com
www.artistsandillustrators/
clivemelbourne

Points of Departure

16th - 27th July

Jane Barnard
Jane Macey
June Ridgway

Millhouse Art,
Unit 1,
Rose Mills Industrial
Estate
Ilminster
TA19 9P
Tuesday to Saturday
9.30 - 4.30

ANYA BEAUMONT AND JO TAYLOR: 'FLOURISH'

Until 13 July

The Pound Arts Centre, Pound Hill,
CORSHAM, SN13 9HX. 01249 701628 /
poundarts.org.uk. "New sculptural
work inspired by local architecture."

'INDIAN SUMMER'

Until 14 July

Russell Cotes Museum & Art Gallery,
BOURNEMOUTH, BH1 3AA. Tuesday -
Sunday and Bank Holiday Monday
10am - 5pm. russellcotes.com.
"Paintings and drawings by Felicity
House and Billa Edwards."

'BAUHAUS' Until 20 July

Kobi & Teal, 57 Catherine Street,
FROME, BA11 1DA. Wednesday -
Saturday 10am - 4.30pm. 07737
367419 / kobiandteal.co.uk. "In the
100th anniversary year of the Bauhaus
school, Kobi & Teal presents a fantastic
collection of art, design and craft,
strongly inspired by this highly
influential movement."

JO BARBER AND PATRICK HALLISSEY: 'ENCOUNTERS'

Until 20 July

Trowbridge Town Hall, Market Street,
TROWBRIDGE, BA14 8EQ. Monday -
Friday 10am - 4pm, Saturday 10am -
2pm. 01225 774306. "Work by our two
Open 2018 Prize Winners. Through 2D
figurative works they acknowledge
their encounters with artists who have
inspired them."

'REFLECTIONS: A FRESH LOOK' Until 21 July

Malthouse Gallery, East Lambrook
Manor Gardens, Silver Street, EAST
LAMBROOK, TA13 5HH. Tuesday -
Sunday 10am - 5pm. 07812 837825.
"Returning from New York and Cuba,
Moish Sokal reflects with a fresh look
over the 25 years of exhibiting in the
Malthouse Gallery and all the exotic
locations visited during that time."

SUMMER SHOW 2019

Until 2 August

Atkinson Gallery, Millfield School,
STREET, BA16 0YD. Monday - Saturday
9.30am - 5pm. atkinsongallery.co.uk.
"The annual Summer Show offers local
artists the opportunity to exhibit their
works in the Atkinson Gallery."



STEVE NEVILLE AND DEBRA SWEENEY

Until 15 July

Gallery On The Square, Queen Mother
Square, DORCHESTER, DT1 3BL.
9.30am - 5pm. 01305 213322 /
gallerypoundbury.co.uk. "Sinuous,
linear landscapes by painter Debra
Sweeney and elegant, finely-balanced
ceramics from potter Steve Neville."

Above: Debra Sweeney 'Towards The
Sea' (Mixed media on canvas)



Contemporary Interiors in Wood

5 rooms full of unique wood work from
over 200 craftsmen working in the UK

Ranging from kitchenware to one-off
jewellery boxes and furniture

Coffee shop and small children's play area

**Celebrating 40 years of promoting British
woodwork in Abbotsbury 1979 - 2019**

Rodden Row, Abbotsbury, DT3 4JL
www.danselgallery.co.uk

01305 871515
Open 10am - 5.30pm every day



SARAH HOUGH: 'MOMENT'
Until 3 August

Main Gallery, Lighthouse, 21 Kingland Road, POOLE, BH15 1UG. Tuesday - Saturday 10am - 9pm. 01202 280000 / lighthousepoole.co.uk. "What would it feel like to be free of distraction and completely immersed in a moment? Moment is an installation that places you at the heart of large-scale 3D oil paintings, projected drawings and sound. This body of work is the result of making the journey to Shard Point on Brownsea Island, Poole Harbour once a week, every week over the course of a year."



ANGIE ROOKE AND CHRIS KAMPF
Until 6 August

John Leach Gallery at Muchelney Pottery, MUCHELNEY, near Langport, Somerset, TA10 0DW. Tuesday - Saturday 10am - 1pm and 2 - 4pm. 01458 250324 / johnleachpottery.co.uk. "Acrylic landscape paintings by Angie Rooke and metal garden sculpture by Chris Kampf. Signed ceramics, leather work and silver jewellery also on display in the gallery."

'THE SUMMER EXHIBITION'
Until 10 August

Artwave West, MORCOMBELAKE, DT6 6DY. Tuesday - Saturday 10am - 5pm. 01297 489746 / artwavewest.com.



FIONA ROBINSON 'LA MER DEBUSSY' (Graphite, charcoal and mixed media, 80 x 120 cm, 2016)

DRAWING ON DORSET

Dorset Visual Arts, in partnership with Evolver magazine, are celebrating the launch of *Drawing on Dorset*, a book featuring 36 selected drawings, with an exhibition featuring the original drawings. The selection was made from work submitted following an open call to survey current themes, trends and innovations on drawing practices. It spans the figurative, the abstract and both physical and digital drawings made in Dorset, of Dorset and about Dorset.

This is the second in an ongoing series of publications on different art forms to be produced by Dorset Visual Arts, best known as producers of Dorset Art Weeks. The first, *Fifty Dorset Makers*, was also accompanied by an exhibition, and has helped invigorate the profile of design and craft in Dorset. *Drawing on Dorset* seeks to highlight a very different aspect of creative practice in the county.

The hardback book is available from the featured artists, Dorset Visual Arts, and various outlets from 7 July, priced £15.

5 - 17 July: The Fine Foundation Gallery, Durlston Country Park, SWANAGE, BH19 2JL. 10am - 5pm.
dorsetvisualarts.org

'FIRE: FLASHES TO ASHES IN BRITISH ART 1692 - 2019'

Until 1 September

Royal West of England Academy, Queen's Road, Clifton, BRISTOL, BS8 1PX. Tuesday - Saturday 10am - 5.30pm, Sunday 11am - 5pm. £7.95 / £6.75. rwa.org.uk. "A major exhibition tracing the representation of fire in British art across the last four centuries, exploring the symbolism and meaning the element has had for artists throughout history."

'NATURAL SELECTION'

Until 15 September

Bristol Museum & Art Gallery, Queens Road, BRISTOL, BS8 1RL. Tuesday - Sunday 10am - 5pm. 0117 922 4749. "Andy Holden and his ornithologist father Peter take us on a journey from nest-building to egg-collecting, bringing together their personal collections of found objects with sculpted birdsong, a human-scale sculpture of a bower bird, exquisite replica eggs crafted from porcelain, and two new video works."

JOEL FISHER AND DAVE KING

Until 15 September

The Shippon Gallery, Hook Farm, CHARDSTOCK, Axminster, EX13 7DD. Sunday 2 - 5pm. 01460 220021. "Drawings and sculpture."

FUNDRAISING ART AUCTION

Until 23 September

Central Gallery, Royal United Hospitals Bath, Combe Park, BATH, BA1 3NG. Monday - Sunday 8am - 8pm. 01225 824987 / artatruh.org / bathartistsstudios.co.uk.

SUMMER OF SOUND ART
20 JULY - 1 SEPT 2019

galleries | studios | shop | cafe
2 Bridge Street, Frome BA11 1BB
01373 473980 | www.blackswanarts.org.uk

HERITAGE
L.A.S.

CASTING STUDIO WORKSHOP
5 - 14 July
Long Gallery, Black Swan Arts

CASTING THE WORLD

Events & exhibitions celebrating the iconic sculptures, statues and civic works cast at J.W. Singer & Sons foundry in Frome.

CASTING THE WORLD

ROOKLANEARTS.ORG.UK

OPEN: Mon - Sat 10am-4pm
and Independent Market Sundays
Registered Charity No. 292463

BLACKSWANARTS

'TURNER IN BRIDPORT'

Until 28 September

Bridport Museum, 25 South Street, BRIDPORT, DT6 3RJ. Monday - Saturday 11am - 4pm. 01308 458703 / bridportmuseum.co.uk. "A special exhibition which includes the loan of JMW Turner's watercolour of Bridport Harbour from Bury Art Museum in Lancashire."



AUGUSTUS JOHN: 'DRAWN FROM LIFE'

Until 29 September

The Salisbury Museum, The King's House, 65 The Close, SALISBURY, SP1 2EN. Monday - Saturday 10am - 5pm, Sunday 12noon - 5pm. £8 / £4. 01722 332151 / salisburymuseum.org.uk. "This major retrospective of the work of artist Augustus John (1878 - 1961) focuses on John's early to mid-career, examining his reputation and looking in-depth at his achievements in drawing and etching."

Above: 'Colonel TE Lawrence' (1919)
© Estate of Augustus John / Tate, London 2018

ART FOR LIFE FUNDRAISER EXHIBITION

Until 15 October

The Wall Gallery Space, Musgrove Park Hospital, TAUNTON, TA1 5DA. 9am - 9pm. artforlife.nhs.uk. "An exhibition of work generously gifted by artists who have worked with Art for Life."

'EELES POTTER'S LAST WOOD FIRING'

Until 31 October

North Undercroft, Forde Abbey and Gardens, CHARD, TA20 4LU. 10.30am - 4.30pm. £13 / £5 / free entry. 01308 868257. "New stoneware, porcelain and raku by the Eeles pottery."



'BETWEEN A ROCK...' (Mixed media on paper, 2019)

ANDY ROLLO: TERRA INCOGNITA

Lyme Bay Arts CIC, the members-based company of artists and makers in the Southwest opens its new exhibition venue with landscapes of the psyche by painter Andy Rollo. The Gallery will have its official opening on 10th August with a showcase of recent paintings by Andy Rollo, a lecturer in art and design at Yeovil College.

Andy is excited about exhibiting at Symondsburry for a number of reasons: "Firstly, the work I have been producing over the course of the last ten years has been inspired in part by the geology and history of Dorset and in particular the Dorset Ridgeway and Jurassic Coast. Secondly, I want to develop a higher profile in the area and feel that this new gallery provides a good opportunity for me to do so. It's a beautiful location in the midst of the landscape of Dorset. Thirdly, it is exciting for a new gallery to open that provides opportunities for work to be exhibited that isn't quite as traditional - work that doesn't only respond to a specific place but delves more into imaginary landscapes and foregrounds visual language elements like shape, line and colour."

10 - 21 August: The Gallery, Symondsburry Estate, SYMONDSBURY, Bridport, DT6 6HG. 10.30am - 4.30pm. 07821 463601 / lymebayarts.co.uk.



'THE ART OF THE POTTER: SOMERSET SLIPWARE'

Until 9 November

Somerset Rural Life Museum, Chilkwell Street, GLASTONBURY, BA6 8DB. Tuesday - Sunday 10am - 5pm. £7.50 / £3.50. 01458 831197 / srlm.org.uk. "Exhibition exploring how slipware ceramics developed in Somerset from the late 1600s onward."

WILLIAM DE MORGAN: 'SUBLIME SYMMETRY'

Until 2 February

Russell-Cotes Art Gallery & Museum East Cliff Promenade, BOURNEMOUTH, BH1 3AA. Tuesday - Sunday 10am - 5pm. £7.50 / £4. 01202 451858 / russellcotes.com. "William de Morgan revolutionised ceramic design in the late-Victorian period. From his fantastical beasts which wrap themselves around his ceramic vases, to his fanciful flora which meander across tiles, his designs fascinated his contemporaries and continue to captivate today."

JUNE JAMES

1 - 6 July

Taunton Library, Paul Street, TAUNTON, TA1 3XZ. Monday - Wednesday 9.30am - 5.30pm, Thursday 9.30am - 7pm, Saturday 9.30am - 1pm. 07778 391559.

'THE POSTCARD IS ALWAYS INNOCENT'

1 - 19 July

Frome Library, Justice Lane, FROME, BA11 1BE. Monday - Friday 9.30am - 5pm, Saturday 9.30am - 4pm. 01373 462215. "Pre-1920s postcards of Somerset, many hand-tinted."



"Colleen du Pon - Artist Blacksmith"
1st-30th July



"Out of Smoke"
Jan Griffiths
31st July-2nd September



THE CREATIVE GALLERY

Showcasing ceramics, paintings, photography, jewellery and glass by local artists

St John's Hill, Wareham, Dorset BH20 4NB t 01929 551700 e fiona@creativegallerywareham.co.uk

Open daily 10am-5pm including Sundays



NEXT ISSUE SOMERSET ART WEEKS FESTIVAL 2019

EVOLVER 113 (SEPTEMBER AND OCTOBER 2019)

BLACKSWAN OPEN 2019

CALL FOR ENTRIES

blackswanarts.org.uk

Deadline 13 Sept

Exhibition

18 Oct — 16 Nov



JUDGES

Robert Devereux, Katherine Fry, Luke Jerram, Jaqueline Moore, Sandra Porter.

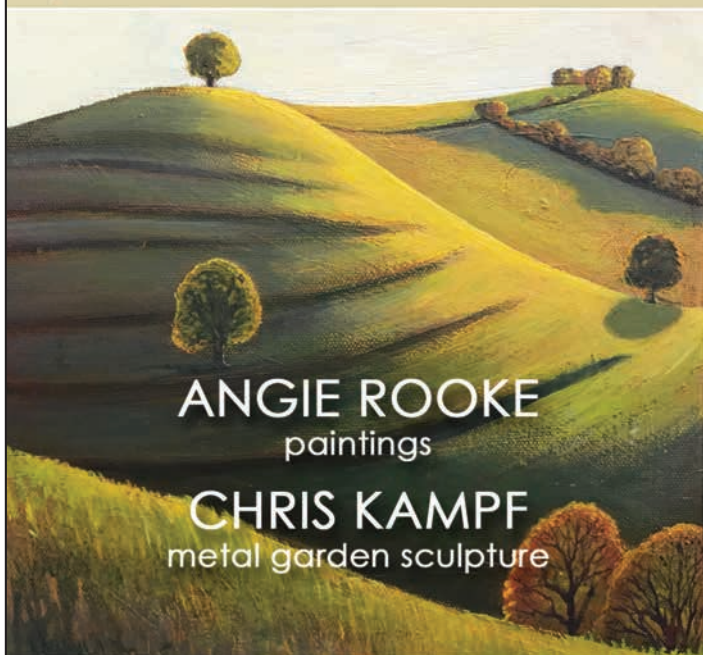
PRIZES

total prizes worth over £3000

Image: Interloper by Alessandra Alexandroff

Registered Charity No. 292463

JOHN LEACH GALLERY



ANGIE ROOKE
paintings

CHRIS KAMPF
metal garden sculpture

11 May - 6 August 2019

NEW OPENING HOURS:

Tuesday - Saturday, 10-1, 2-4

Muchelney, Nr Langport TA10 0DW

www.johnleachpottery.co.uk



SUBLIME SYMMETRY

The Mathematics behind De Morgan's Ceramic Designs



14 June 2019 - 2 February 2020

East Cliff, Bournemouth BH1 3AA

www.russellcotes.com

Image © De Morgan Foundation

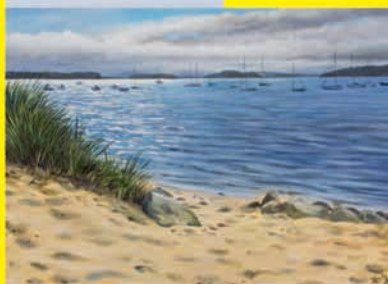
RUSSELL-COTES
HOUSE • GALLERY • GARDEN

The Dorset Arts & Crafts Summer Exhibition 2019

Friday 2nd - Tuesday 6th August
Open 10am - 5pm, Tues 10am - 4pm



Superb Contemporary & Heritage Crafts
 Fine Art, Craft & Photography Exhibitions
 Demonstrations
 Have-a-go Workshops
 Refreshments
 Free Parking



Purbeck School, Worgret Road
Wareham BH20 4PF



www.dorsetartsandcrafts.org
 Registered Charity 306252



EXHIBIT A

Artists and photographers are invited to submit work for consideration as next issue's page 3 **EXHIBIT A** by emailing images to: simon@evolver.org.uk



GUGGLETON FARM ARTS SUMMER OPEN EXHIBITION
 Station Road, STALBRIDGE, Dorset DT10 2RQ

20th July - 4th September
 Tuesday - Sunday 11am - 3pm
www.guggletonfarmarts.com



VISUAL ARTS



PAUL CLEDEN 'WET WALK' (Lino print)

THREE PRINTMAKERS

"For the Gallery's summer exhibition, Dorset printmakers Paul Cleden and Robin Mackenzie are joined by formerly Dorset-based Sarah Ross-Thompson (now relocated to Scotland)."

20 July - 26 August: Gallery On The Square, Queen Mother Square, DORCHESTER, DT1 3BL. 9.30am - 5pm. 01305 213322 / gallerypoundbury.co.uk.

ILMINSTER OPEN EXHIBITION 2019

1 - 30 July

Ilminster Arts Centre, The Meeting House, East Street, ILMINSTER, TA19 0AN. Monday - Friday 9.30am - 4.30pm, Saturday 9.30am - 2.30pm. themeetinghouse.org.uk. "Annual exhibition by West Country artists."

COLLEEN DU PON

1 - 30 July

The Creative Gallery, St John's Hill, WAREHAM, BH20 4NB. 10am - 5pm. creativegallerywareham.co.uk. "Colleen brings a varied and artistic range of her creations in metal made at her forge. Both functional and decorative, for use in the home and garden."

SALISBURY GROUP OF ARTISTS: 'TIME AND TIDES'

2 - 30 July

Five Rivers Sports and Wellbeing Centre, Hulse Road, SALISBURY, SP1 3NR. 6am - 10pm. 01722 326280 / salisburygroupofartists.co.uk. "A themed and challenging exhibition, that features recent work in a variety of mediums by local talented SGA artists."

EXETER CRAFT FESTIVAL

4 - 6 July

Exeter Cathedral, EXETER. exetercraftfestival.co.uk. "A 3-day celebration of the very best artists and makers based in the South West."

'ART IN THE YARD'

6 and 7 July

12 Avebury Avenue, BOURNEMOUTH, BH10 7ED. 10am - 4.30pm. 01202 590600 / 07807 704905 / recyclart.co.uk. "Six artists offer pictures, sculpture, textiles and more in a lovely garden setting."

SCULPTURE BY THE LAKES SUMMER FESTIVAL

6 and 7 July

Sculpture by the Lakes, PALLINGTON, near Dorchester, DT2 8QU. 10am - 5pm. £7.50. sculpturebythelakes.co.uk. "Over 40 stalls featuring Dorset and South West artists, craftsmen and local food producers. Visitors can indulge in a spot of leisurely shopping as well enjoying the park, the Barn Gallery, sculptures, the lakes and the beautiful gardens bursting with colour."

FROME OPEN STUDIOS

6 - 14 July

Various venues in FROME, Somerset. fromeopenstudios.co.uk. "Artists and makers open their studio and workshop doors for this much loved event during Frome Festival. It is a perfect opportunity to meet the artists in a relaxed setting and buy directly from them. This event supports the work of local artisans who add to the independent and vibrant community in Frome. There is a wealth of talent in this lovely market town and something on the art trail to suit all tastes and budgets. Taking part this year we have painters, printers, ceramicists, jewellers, sculptors, fashion and textile designers, illustrators, photographers, glass artists and wood workers."

'PAINT BOX'

6 - 14 July

The Box Room, 2 Bath Street, FROME, BA11 1DG. Saturday and Sunday 10am - 3pm, Monday - Friday 10am - 4pm. 07493 943845. "Paintings and drawings by Silvana Alvarez Noque, plus assemblages in 'found' boxes by Robert Lee."



PURBECK NEW WAVE GALLERY
 SWANAGE

ART GALLERY

Pictures, ceramics and more for you and your home

ARTISTS AT WORK

Owner Gina Marshall and fellow artists

ART CLASSES

Art courses, art workshops, pottery classes

ROOM HIRE

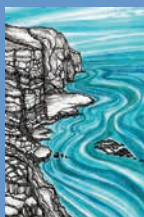
Open 10am - 5pm daily

25 Commercial Road, Swanage,
Dorset BH19 1DF (next to Chococo)

www.purbecknewwave.co.uk

07434 814384

purbecknewwave@gmail.com



VISUAL ARTS

MARLBOROUGH OPEN STUDIOS

6 - 28 July

Locations in and around MARLBOROUGH, Wiltshire. marlboroughopenstudios.co.uk. "An opportunity for the public to meet professional artists in the beautiful north Wessex Chalk Downs and visit their studios, workshops or galleries over four weekends in July."



'WAR AND RUMOURS OF WAR'

6 July - 15 September

Victoria Art Gallery, Pulteney Bridge, BATH, BA2 4AT. 10.30am - 5pm. £4.50. victoriagal.org.uk. "Our summer exhibition has been drawn largely from The Hepworth Wakefield's outstanding collection of 1940s British works on paper, including pieces by Henry Moore, Graham Sutherland, Barbara Hepworth and John Piper."

Above: Leslie Atkinson 'Northampton Street, Bath' (1942)

BERNARD OLLIS: 'A TALE OF TWO CITIES'

6 July - 15 September

Victoria Art Gallery, Pulteney Bridge, BATH, BA2 4AT. 10.30am - 5pm. victoriagal.org.uk. "Bernard Ollis was born in Bath and spent his formative years here. The works in this show are based on memories and recent visits to the cities of Bath and Paris."

'ANIMATING EARLY MAN'

6 July - 3 November

M Shed, Princes Wharf, Wapping Road, BRISTOL, BS1 4RN. Tuesday - Sunday 10am - 5pm. £6 / £5. 0117 922 4749. "Take a trip behind the camera this with this blockbuster exhibition, showing how the world-famous Bristol based studio Aardman made their mammoth movie, *Early Man*."

'MELES MELES'

8 - 27 July

A2 Gallery, 80 High Street, WELLS, BA5 2AJ. Monday - Saturday 10am - 5pm. a2gallery.co.uk. "Artists from around the country have come together to positively raise awareness of badgers. Painting, sculpture, photography, feltmaking, ceramics, printmaking, graffiti and jewellery."



JANETTE KERR 'NORTH-WESTERLY WINDS, NESS OF BAKKA' (Study on watercolour paper)

IGNITING SIGHT

"This summer, while JMW Turner's painting, *Bridport, Dorsetshire*, is showing at Bridport Museum, we celebrate Turner in Bridport by exploring the ways in which his influence lives on in contemporary landscape painting, particularly in the work of Fred Cuming, Luke Elwes, Vanessa Gardiner, Frances Hatch, Janette Kerr, and Alex Lowery, all of whom to some extent belong in the great descriptive English Romantic tradition which began with Turner's truly great paintings."

6 July - 8 September: Sladers Yard, WEST BAY, Bridport, DT6 4EL. Monday - Saturday 10am - 4.30pm, Sunday 12noon - 4.30pm. 01308 459511 / sladersyard.co.uk.



CHRISTINE ROGERS: 'SEAWEED'

10 - 16 July

Shaftesbury Arts Centre, 13 Bell Street, SHAFTESBURY, SP7 8AR. 10am - 4pm. 01305 267113 / christinerogersart.com. "Seaweed is only revealed at low tide and is hugely inspiring, according to Dorchester artist Christine Rogers, who looks at her subject from unusual angles, focussing on its patterns and movement and the way it catches the light."

THE SHAFTESBURY GROUP

12 July

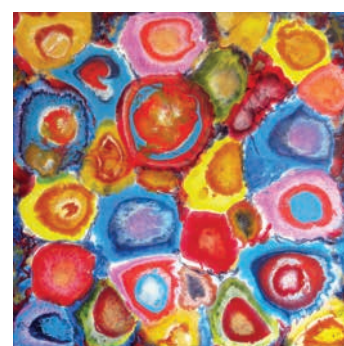
Town Hall, 21 High Street, SHAFTESBURY, SP7 8LY. 10am - 4pm. 01747 853822. "Affordable contemporary fine art."



'COLOUR LINE AND THREAD'

12 - 31 July

The Malthouse Gallery, Town Mill, LYME REGIS, DT7 3PU. 10am - 5pm. 01297 444111. "Paintings by Hilary Buckley, Philip Winstone and Russell Coulson, hand-stitched textiles by Sue Calder, plus charred and scarred land art by John Calder."



'SUMMER COLOURS'

12 July - 17 August

Tincton Gallery, The Old School House, TINCLETON, near Dorchester, DT2 8QR. Friday - Monday 10am - 5pm. tinctongallery.com. "Summer ought to have arrived by mid July and if not come and visit us in Tincton where our artists will remind you of the blaze of colour that should be all around us."

Above: Ken Nemar 'Wildflowers 3'

PHOTOGRAPHY



caldecourt

productions

Rémy Lloyd LRPS

Esmé Lloyd LRPS

07710 618072

caldecourt@hotmail.com

caldecourtproductions.com

VISUAL ARTS

'POINTS OF DEPARTURE'

16 - 27 July

Millhouse Art, Unit 1, Rose Mills Industrial Estate, ILMINSTER, TA19 9PS. Tuesday - Saturday 9.30am - 4.30pm. 07525 618653. "Sculpture, painting and digital media showing a range of enquiries by Jane Barnard, Jane Macey and June Ridgeway. Their work develops in response to individual points of departure, which affect the inceptions and process of making, a channelling of intuitive and spontaneous emotions from raw to refined, a succession of moments from the past that constantly inform the present, a sense that reality is not a fixed constant but rather a set of ideas and interpretations."



'SOMER INSPIRATIONS 19'

16 - 27 July

Wells and Mendip Museum, Cathedral Green, WELLS, BA5 2UE, Monday - Saturday 10am - 5pm. 01749 572267. "Somerset, national and international artists show an eclectic mix of works in paint, glass, wood and textiles."

ANDY BLAKE: 'LAND & SEA IN OILS'

16 July - 6 September

The Hub, Brock Way, VERWOOD, BH31 7QE. Monday - Friday 6.30am - 10pm, Saturday and Sunday 8.30am - 6.30pm. 01425 610490. "Atmospheric and expansive seascapes, combined with trademark detailed local and coastal oil paintings."

'OVER THE HILLS AND FAR AWAY'

17 - 30 July

Shaftesbury Arts Centre, 13 Bell Street, SHAFTESBURY, SP7 8AR. 10am - 4pm. 01747 854321. "Landscape paintings by Sally Ridout."

WELLS ART CONTEMPORARY

20 July - 11 August

Wells Cathedral, Cathedral Green, WELLS, BA5 2UE. 7am - 6pm. 01749 674483 / wellsartcontemporary.co.uk. "A unique opportunity to see some of the world's finest contemporary art set within the magnificent surroundings of the medieval Cathedral."



BEYOND

Beyond, a solo exhibition by award-winning artist Diane Maclean, comprises of eight large-scale pieces fabricated in stainless steel or feather-light aluminium, juxtaposing modern materials with the ancient building. Each piece invites the visitor to explore the space in which it stands, or above which it is suspended, and each changes perspective or colour depending on the angle from which it is viewed.

Speaking about her work, the artist Diane Maclean said: "I see the materials themselves as an important element in my work. They dictate, in a way, how the work turns out. I try to bring their best qualities into view, in sculptures and installations that reflect light, are suspended, have moving parts and colour, and are therefore not static and unchanging. The science of the material also interests me - how a clear oxide layer on the polished surface of stainless steel produces colour that changes according to the angle of entry of light hitting it."

Until 30 September: Salisbury Cathedral, The Close, SALISBURY, SP1 2EJ. 9am - 5pm. 01722 717817 / salisburycathedral.org.uk.



'THE SUMMER SHOW'

20 July - 8 September

Devon Guild of Craftsmen, Riverside Mill, BOVEY TRACEY, TQ13 9AF. 10am - 5.30pm. 01626 832223 / crafts.org.uk. "Ceramics, textiles and print."

Above: Jenny Southam Ceramics

'THE NEGLIGIBLE THINGS UNDER YOUR FEET'

22 - 27 July

The Bishops Palace, WELLS, BA5 2PD. 10am - 5pm. £8.05 / £3.55. 01749 988111 / heritagecourtyardstudio.com / bishopsalace.org.uk. "This intriguing work by artist Martin Cody takes the form of an interactive sculptural event."

'RE-FORMATION'

22 July - 6 October

The Bishops Palace, WELLS, BA5 2PD. 10am - 5pm. £8.05 / £3.55. 01749 988111 / heritagecourtyardstudio.com / bishopsalace.org.uk. "Responding directly to the Bishops Palace and its surroundings, Heritage Courtyard Studio artists, associate artists and invited guest artists, will be showcasing their creative talents in this unique exhibition."

WIMBORNE ART CLUB

23 July - 3 August

Church House, High Street, Wimborne, BH21 1HR. 10am - 4.30pm. 01202 886438. "Summer exhibition of original paintings, browsers and cards."

'ART IN THE BARN'

26 - 28 July

West Barn, BRADFORD ON AVON, BA15 1LF. 10am - 4.30pm. 01275 341583. "Ceramics, paintings, prints and jewellery."

MARK ROCHESTER AND RELTON MARINE

27 July - 17 August

Hybrid Gallery, 51 High Street, HONITON, EX14 1PW. Tuesday - Saturday 10am - 5pm. hybrid-devon.co.uk. "Two separate showings by artists embracing vigour and colour: Mark Rochester's plein air paintings of the vertiginous North Devon coastline and Relton Marine's landscapes of West Yorkshire."

July 20 to August 26
**THREE
PRINT
MAKERS**



Paul Cleden



Robin Mackenzie



Sarah Ross-Thompson

GALLERY ON THE SQUARE

Queen Mother Square, Poundbury, Dorchester DT1 3BL

Open daily, 9.30am to 5pm; Sundays 10am to 3pm

www.gallerypoundbury.co.uk

JULIA HUTTON

Julia Hutton grew up watching her architect father make drawings. One of his hangs on her kitchen wall and was a starting point for her drawing in response, *Tracing My Father's Time*. Hutton is an observer, a listener. She allows the world around her to seep into her being through her senses. Eyes closed she will take in "the visceral smells of landscapes", the sound of birdsong: "a mayday dawn chorus, the cacophony of life". "Something catches me unawares, watching sun-glitter on the incoming tide." Her work is a distillation of experiences, a synthesis of impressions and observations. Words and language, poetry and philosophy have had a profound effect on her work.

Travelling widely, living in America, France, Australia and in Iran in the dying days of the Persian Empire provided her with the opportunity to immerse herself in many different cultures. On her return to the UK she studied sculpture at Canterbury followed by printmaking at the Royal College, but in both cases her major discipline was invaded by anything that she needed to investigate in terms of materials or process. She worked with paint, print and photography. She made objects, threading the thinnest of wire, guitar strings, through ceramic, recorded video and sound, but above all she drew. It is to drawing that she turns to express her innermost thoughts and ideas. It is the bedrock of her practice, the thing that allows her to explore and consider, to process memory and observation and to move forward into the other areas that interest her. "Glass, paper and wire are the three adjuncts to my drawings." They are the things that she uses to start a conversation between her thoughts and her drawing.

A passionate collector: shells, stones, insects, seed-heads and miniature shoes grace every surface in her studio and her house. Her life and work are entwined, her practice embedded in her every day and one cannot exist without the other. Although her work is not obviously political, major news events, migration, climate change, invade her working hours.



'BURNING LIGHT, SIESTA' (Burnt line drawing on paper, 30 x 30 cm, 2017)

Hutton's work is abstract and has moved gradually away from figurative references. Notebooks and sketchbooks have been her constant companions throughout her life. They accompanied her on her early travels and continue to do so now. She records a stream of consciousness of thought in a neat, penciled hand - words, titles, notes of what she sees, hears, feels and reads alongside dozens of little sketches.

Early concerns, which led to a brief foray into environmental studies, have stayed with her. The collating of Met Office recordings of data on sunlight and tides has fed into her ongoing *Burning Light* series, burnt line on paper. She marks the paper with a tool which burns the surface of the paper, taking the line upwards and turning allowing it to fall with its full weight to the bottom of the page. They are extraordinarily beautiful and a testament to the importance of these works is their selection numerous times for major open exhibitions: Jerwood, Trinity Buoy Wharf, Threadneedle Prize, and led to their acquisition by the British Museum for their collection. Even, measured and yet supremely irregular they hint at Agnes Martin. Originally triggered by the sunlight falling through her studio window they pursue a process and time-based agenda. Hutton continues to move between media and materials, using whatever is appropriate for the response she wants to make. A series of evocative photographs

of trees in Scotland hint at her painstaking progress: editing, drawing into the image, erasing and re-photographing to achieve an ethereal ghostly presence. Small wire sculptures capture and enclose space as well as occupying the space in which they sit. All of her work has a sculptural element. Gouging the metal plate in etching or burning marks on paper, replicate carving which was one of the sculptural processes she studied.

Constantly searching, her work is always about time and place and memory. She pares things down to their essential elements, embracing the rhythms of life, responding to daily and seasonal repetitions. She has long been interested in Japanese aesthetics, particularly the interchangeability of interior and exterior space of Japanese gardens and the simplicity, attention to detail and specifics of planting. Her work is contemplative and led by curiosity. It is a search for truth leading to a melding of consciousness and unconsciousness from which something new can emerge. Her work exists in a liminal space, where she says, "I can make the intangible visible".

Fiona Robinson

'DRAWING ON DORSET'

5 - 17 July: The Fine Foundation Gallery, Durlston Country Park, SWANAGE, BH19 2JL. 10am - 5pm. dorsetvisualarts.org
juliafhutton@gmail.com



VISUAL ARTS



JANE COLQUHOUN 'BEACH' (Embroidery)

BOILERHOUSE GALLERY

It's twenty years since Frances Pollard started her pottery in a workshop on the wrong side of a railway embankment beneath Nine Barrow Down. Corfe Castle looked down and the steam trains whistled past. In 2002 (with two others) she established the Boilerhouse Gallery. Today, the trains stop, a footbridge crosses the line, and visitors walk, drive and cycle, to one of the liveliest and most beautifully ramshackle art destinations in Dorset, where they find a co-operative of seven artists, plus invited guests, exhibiting their work, running workshops and putting on collaborative events with music and food.

The artists and makers of the Boilerhouse all have studios in buildings which were once a milk factory for the outlying farms of Purbeck. This attachment to the local landscape is still visible in much of the work on show. From their kilns, easels and workbenches, using clay, glass, metal and found materials, they produce ceramics, painting, sculpture, pottery, photography, and jewellery. Prints and cards are available and the Boilerhouse always has something new to see.

In addition to their regular opening, Boilerhouse Gallery are delighted to be at Durlston Castle this summer with a new show called *Ten Bays*. It's an exploration of the Purbeck coastline from Worbarrow to Shell Bay, inspired by experience and events in the ten bays of the title.

Tony Kerins

BOILERHOUSE GALLERY

Sandy Hill Lane, CORFE CASTLE, BH20 5JF. Monday - Saturday 10am - 5pm. boilerhousegallery.co.uk.

'TEN BAYS'

24 July - 11 August: The Fine Foundation Gallery, Durlston, SWANAGE, BH19 2JL. 10am - 4.30pm.

ID ARTISTS: 'PRESENCE'

27 July - 24 August

ACE Arts, Market Place, SOMERTON, TA117NB. Tuesday - Saturday 10am - 5pm. 01458 273008 / acearts.co.uk.
"Gail Mason, Tina Hill, Sara Parsons, Stephanie Wooster, and Nicki Campbell work in a range of disciplines including painting, mixed media, printmaking, ceramics, textiles and book arts."

BOB AND ROBERTA SMITH: 'PAINT FREEDOM'

27 July - 6 September

Shire Hall Historic Courthouse, High West Street, DORCHESTER, DT1 1UY. 10am - 5pm. £9.50 / £5. 01305 261849 / shirehalldorset.org.

'CREATIVE COVERAGE'

29 July - 24 August

Ilminster Arts Centre, The Meeting House, East Street, ILMINSTER, TA19 0AN. Monday - Friday 9.30am - 4.30pm, Saturday 9.30am - 2.30pm. themeetinghouse.org.uk. "Stunning and thought provoking paintings and sculpture by selected professional artists from across the UK."

'SUMMER EXHIBITION'

29 July - 24 August

The Gallery at 41, 41 East Street, CORFE CASTLE, BH20 5EE. Tuesday - Saturday 11am - 4pm. 01929 480095 / galleryat41.com. "Exhibition featuring contemporary Dorset painters David

RE-FORMATION

Heritage Courtyard Gallery and Studios presents a contemporary fine art exhibition at The Bishop's Palace, Wells

22nd July - 6th October
Palace open daily 10am - 6pm
(HCGS open Tues - Sat 10 - 4pm)

Background image by Anthony Frost

The Bishop's Palace, Wells BA5 2PD
Heritage Courtyard Gallery and Studios
6 Heritage Courtyard, Sadler Street, Wells BA5 2RR

For our full events programme during the exhibition see our website, www.heritagecourtyardstudio.com

VISUAL ARTS

Atkins, Rob Adams, Felicity House, Judy Tate, Roger Dell Seddon, Vicky Finding and Edward Vine, plus sculptors Brendon Murless, Sue Lansbury, Laura Pentreath and Moira Purver."

JAN GRIFFITHS: 'OUT OF SMOKE' 31 July - 2 September

The Creative Gallery, St John's Hill, WAREHAM, BH20 4NB. 10am - 5pm. creativegallerywareham.co.uk. "Pit fired ceramics showing the full effects of the smoke on the clay. Jan creates many forms, lidded and handled, small and large at her studio in Hampshire."



THE DORSET ARTS & CRAFTS SUMMER EXHIBITION

2 - 6 August

Purbeck School, Worgret Road, WAREHAM, BH20 4PF. Friday - Monday 10am - 5pm, Tuesday 10am - 4pm. dorsetartsandcrafts.org. "Superb contemporary and heritage crafts, fine art, photography, demonstrations, have-a-go workshops, refreshments and free parking."

Above: Sally Davies 'Iris'

WILL HUGHES: 'YOU AND ME' 2 - 30 August

Roper Gallery, Bath Artist Studios, The Old Malthouse, Comfortable Place, BATH, BA1 3AJ. Monday - Friday 12noon - 5pm. 07794 748719 / willhughesartist.com. "Will's work is autobiographical in nature and explores lust, sexuality and looks beyond the duality of gender."

CLIFTON ARTS CLUB

3 - 18 August

The Undercroft, Victoria Methodist Church, 1 Whiteladies Road, Clifton, BRISTOL, BS8 1NU. Monday - Sunday 11.30am - 5.30pm 17.30 (11.30am - 1.30pm on 18 August). cliftonartsclub.co.uk. "Affordable art exhibition showing 350+ paintings and sculptures, from both amateur and professional artists. Selected by a panel of independent judges, all works are for sale."



DOPPELGANGER

MILLIE GLEESON: ALL WE'LL KNOW

"Large scale figurative paintings, featuring women in a goddess-like fashion, perfused with a kaleidoscope of colours. Millie focuses on themes of identity, archetypes, self-expression and reflection."

Until 31 July: Redbrick Building and Bocabar, Morland Enterprise Park, Morland Road, GLASTONBURY, BA6 9FT. Monday 9am - 4pm, Tuesday - Thursday 9am - 11pm, Friday and Saturday 9am - 1am, Sunday 10am - 4.30pm. 01458 899564 / redbrickbuilding.co.uk / milliegleeson.com.

SALISBURY GROUP OF ARTISTS: 'SUMMER EXHIBITION'

3 - 31 August

Gallery 4, Salisbury Library, SALISBURY, SP1 1BL. Monday, Tuesday and Friday 9am - 7pm, Wednesday, Thursday and Saturday 9am - 5pm. 01722 326280 / salisburygroupofartists.co.uk. "Recent works by local talented artists."

'ANCIENT AND REMARKABLE TREES OF THE NEW FOREST'

5 August - 28 September

The Atrium Gallery, Bournemouth University, Poole House, Fern Barrow, POOLE, BH12 5BB. Monday - Saturday 9am - 5pm. 01202 524111 / davidmartindalerussell.com. "Large format photographs."

'DIVERSITY AND EXPRESSION THROUGH THE MEDIUM OF OILS'

9 - 15 August

Hayloft Gallery, 14 Wick Lane, CHRISTCHURCH, BH23 1HX. 10am - 5pm. 01202 418291 / 07446 851675 / artsamd.co.uk. "Artists Gary Samdaliri and Graham Martin will be exhibiting numerous oil paintings."



GROUP 7 'COLOUR VALUES'

Until 20 July



ARTS

Market Place, Somerton, Somerset TA11 7LX • 01458 273008 • www.acearts.co.uk



GERRY DUDGEON 'BRIDGE OVER THE AVEYRON'

BRIDPORT & WEST DORSET OPEN STUDIOS

Bridport & West Dorset Open Studios is an annual 9-day celebration of contemporary visual artists who live in Bridport and the surrounding countryside. Started by artist Caroline Ireland in 1999, the event has grown over the years to become a distinctive showcase for the thriving West Dorset art scene. Pick up a free 52 page event guide in August and explore the great wealth of talent in the towns, villages, and hamlets across West Dorset from Evershot to Marshwood and Abbotsbury to West Bay."

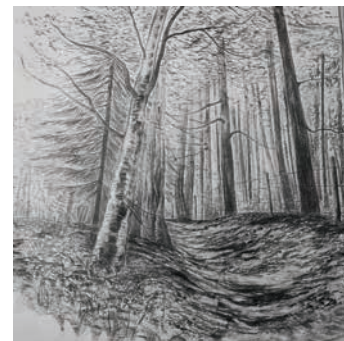
7 - 15 September : 50 venues across BRIDPORT and WEST DORSET. Monday - Sunday 10am - 5pm.
bridportopenstudios.co.uk.



TILIA HOLMES 'PYROGRAPHY AND OILS ON SYCAMORE'



TARA HARLAND VINEY 'CROP RUFF'



'HILLVIEW ART'
10 - 26 August

Hillview, Linwood, RINGWOOD, BH24 3QT. 10.30am - 5pm. 01425 472462 / angela.perrett.co.uk. "Six artists show ceramics, glass, paintings, prints, hand-woven textiles and sculpture in a tranquil part of the New Forest."

BLANDFORD ART SOCIETY
12 - 17 August

Corn Exchange, BLANDFORD, DT11 7AF. 10am - 5pm. 01202 848832. "Annual selected exhibition showcasing work by professional and amateur artists in north and east Dorset."

'COLOUR'

12 - 31 August

A2 Gallery, 80 High Street, WELLS, BA5 2AJ. Monday - Saturday 10am - 5pm. a2gallery.co.uk. "Painting, printmaking and glass, celebrating colour."

SOMERTON GROUP OF ARTISTS
13 - 18 August

Parish Rooms, Market Square, SOMERTON, TA11 7NB. Tuesday - Saturday 10am - 6pm, Sunday 10am - 2pm. somertonartists.co.uk. "Annual exhibition and sale of works."

'MARKING TIME'

15 - 21 August

Somerset Earth Science Centre, Moon's Hill Quarry, Stoke St Michael, RADSTOCK, BA3 5JU. Monday - Saturday 10.30am - 4pm. 01749 840156 / earthsciencecentre.org.uk. "Work inspired by the unique coastal geology of West Somerset exploring the dramatic layers and rich textures that characterise the area alongside underlying themes of concealment, revelation, erasure and deep time."

SUSAN KNIGHTS, LINDA PATTERSON, JEANETTE LAW
16 August - 5 September

The Hayloft Gallery, 14 Wick Lane, CHRISTCHURCH, BH23 1HX. 10am - 5pm. 01202 428004.

BRIDPORT & WEST DORSET OPEN STUDIOS

7-15 SEPTEMBER 2019

**80 ARTISTS
50 VENUES**

bridportopenstudios.co.uk

VISUAL ARTS



'IT WAS WRITTEN IN THE PALMS OF HER HANDS' (Textile, 80 x 65 cm)

MICK LINDBERG: SEW THE SEEDS

"A remarkable exhibition of textile artworks by this Swedish artist exploring female figures and flora through pattern and collage. This latest collection explores themes of flowers and nature entwined with femininity and form."

15 July - 30 August: David Simon Contemporary, 37 High Street, CASTLE CARY, BA7 7AP. Monday, Tuesday, Thursday - Saturday 10am - 5.30pm. 01963 359102 / davidsimoncontemporary.com.

BRUTON ART SOCIETY

17 - 24 August

King's Bruton Memorial Hall, Plox, BRUTON, BA10 0ED. 11am - 5pm. 01747 825529 / brutonartsociety.co.uk.

"Acclaimed juried exhibition of paintings, drawings and sculpture by amateur and professional artists from Somerset, Wiltshire and Dorset."

'TOWN & COUNTRY'

27 August - 7 September

Ilminster Arts Centre, The Meeting House, East Street, ILMINSTER, TA19 0AN. Monday - Friday 9.30am - 4.30pm, Saturday 9.30am - 2.30pm. themeetinghouse.org.uk. "New work by wildlife artists Jackie Cox and Chris Sinden."

WEST COUNTRY QUILT AND

TEXTILE SHOW

29 - 31 August

University of the West of England Exhibition Centre, Filton, BRISTOL, BS34 8QZ. 10am - 4.30pm. £12 / £10. 0117 985 8439 /

contemporaryquilterswest.org. "What do art quilt makers do all day? CQ West will be giving a glimpse into their working studios, with an opportunity to talk to the makers about how they produce their work. It includes quilts made by the demonstrators to illustrate text in textiles, and there will be a brand new exhibition of 16 inch square quilts."

COLIN WILLEY

30 August - 1 October

Gallery On The Square, Queen Mother Square, DORCHESTER, DT1 3BL. 9.30am - 5pm. 01305 213322 / gallerypoundbury.co.uk.

'ABCD'

31 August - 7 September

ACE Arts, Market Place, Somerton, TA11 7NB. Tuesday - Saturday 10am - 5pm. 01458 273008 / acearts.co.uk. "A love of words, materials and imaginative book construction results in a wonderfully varied and intriguing exhibition."

FREE EVOLVER LISTINGS

Exhibition and performance listings should be emailed to: listings@evolver.org.uk

Please supply information (in upper and lower case) in the following order: Event. Date(s). Venue, address (including postcode). Times. Admission fee (if any). Contact number / website. Up to 30 words about the event.

SOMERSET ART WEEKS FESTIVAL 2019

21 SEPTEMBER - 6 OCTOBER

This year celebrates the 25th Anniversary
of Somerset Art Weeks

From August our **FREE FESTIVAL GUIDE** will be available in Tourist Information Centres, libraries, galleries, museums and other outlets across the county and beyond, as well as online

FESTIVAL 2019 features over 130 venues as well as a special event programme including SAW projects and commissions, workshops, demonstrations and Family Friendly activities

somerseartworks.org.uk

SAW
somer
set art
works

The Millhouse Gallery contemporary artspace in Somerset

Unit 1, Rose Mills Industrial Estate, Hort Bridge, Ilminster TA19 9PS

01460 52866 closed Sundays & Mondays

16th - 27 July **Points of Departure** Jane Macey June Ridgway Jane Barnard



BRUTON ART SOCIETY

Sat 17 - Sat 24 Aug '19

King's Bruton Memorial Hall
BRUTON BA10 0ED 11-5 Daily
brutonartsociety.co.uk

Affordable Art - Regional Artists

Exhibition

PERFORMANCE

July and August 2019



KATE TEMPEST

LARMER TREE FESTIVAL

For 28 incredible years, Larmer Tree Festival has been throwing the ultimate family-friendly summer party in the heart of the Wiltshire / Dorset countryside - hosting an eclectic lineup of music, comedy, theatre, arts and crafts workshops, and more - and this year is set to be no different.

Acclaimed London rapper and poet Kate Tempest tops the bill, performing the polemical hip-hop of her acclaimed albums *Everybody Down* and *Let Them Eat Chaos*.

Folk-tinged acoustic singer-songwriter Jack Savoretti will bring his new album *Singing To Strangers* to the main stage, fresh from a UK tour that culminates in two huge Wembley Arena shows.

Australia's exhilarating The Cat Empire will captivate audiences with their infectious and uplifting mash-up of alt-rock, jazz and ska. Southport's indie-rock veterans Gomez join the bill with the distinctive, electronica-infused blues that won them the Mercury Music Prize in 1998.



THE SHIRES



JOSIE LONG

Completing the 2019 headliners are the UK's biggest-selling country music act The Shires and Scottish songstress KT Tunstall - marking a triumphant return to Larmer Tree after her last appearance in 2013.

2019 also sees the welcome addition of Q Album of the Year winners Let's Eat Grandma, whose otherworldly indie-electronica was much-missed at last year's Festival when the band were forced to pull out due to ill health.

The UK's exciting new jazz scene is strongly represented by hypnotic, groove-based jazz-electronica trio GoGo Penguin, classic-jazz-meets-beats adventurers the Ezra Collective, and saxophonist Pete Wareham's avant-garde and ferociously fun jazz-punk band Melt Yourself Down.

Bringing an out-there blend of pan-global psychedelia to the festival are London / Bahrain's must-see Flamingods while BC Camplight and The Wave Pictures will charm festival-goers with their witty but introspective garage folk and wiggly indie-pop. Elsewhere Tank and the Bangas will bring out everyone's best dance moves with their joyful mix of New Orleans R&B, funk and hip-hop.

2019 will also see the addition of the first ever Festival cinema tent, showing everything from retro comedy classics to quirky indie gems. It promises to be the perfect retreat for young festival-goers, as well as a chilled-out venue for everyone else. Plus, due to popular demand, the much-loved Carnival will return - offering Larmer Tree audiences of all ages an unmissable opportunity to take part in the weekend's action.

If you want to watch hidden musical gems alongside big names, recharge your batteries with holistic therapies, immerse yourself in classic cinema and nourish your soul with the best in international street food - and all in the most beautiful festival site in the UK - then the Larmer Tree Festival is the one.

18 - 21 July: Larmer Tree Gardens, TOLLARD ROYAL, SP5 5PY.

larmertreefestival.co.uk



THE CAT EMPIRE

PERFORMANCE

'SECOND PERSON NARRATIVE'

3 July
Dorchester Arts, The Corn Exchange,
High East Street, DORCHESTER, DT1
1HF. 7.30pm. £7.50 / £4. 01305 266926
/ dorchesterarts.org.uk. A Dorchester
Youth Theatre production.



THE HANDLEBARDS: 'THE TEMPEST'

3 July
Corsham Alms Houses, Pound Pill,
CORSHAM, SN13 9HX. 6pm. £12 /
£10. 01249 701628 / poundarts.org.uk.
"Join this all female troupe for a
bicycle-powered production of
Shakespeare's The Tempest. Bring a
picnic!"

DORCHESTER PIANO QUARTET

4 July
Dorchester Arts, The Corn Exchange,
High East Street, DORCHESTER, DT1
1HF. 11am. dorchesterarts.org.uk.

THE NEW HARDY PLAYERS: 'FAR FROM THE MADDING CROWD'

4 July
The Vicarage, 4 Back Lane, CERNE
ABBAS, DT2 7JW. 6.30pm. £15 / £7.50.
01305 266926 / dorchesterarts.org.uk.
"A dramatic outdoor production based
on the well-loved novel that prompted
Thomas Hardy to become a full time
writer. With over 50 actors and
musicians, the ever popular New Hardy
Players bring to life the colourful local
characters of Weatherbury."

'TROWBRIDGE LAUGHS'

4 July
Trowbridge Town Hall, Market Street,
TROWBRIDGE, BA14 8EQ. 8pm. £10.
townhallarts.co.uk. "Comedy night
featuring Bobby Mair, Steve Gribbin,
Adam Riley, and David Ward."

'STILL CRAZY AFTER ALL THESE YEARS'

5 July
Bridport Arts Centre, 9A South Street,
BRIDPORT, DT6 3NR. 8pm. £10. 01308
424204 / bridport-arts.com. "Celebrate
over six decades of Paul Simon's
fantastically eclectic song writing with
Julie Dunn on vocals and Philip Clouts
on piano in a dynamic programme
featuring many well-loved favourites."



RATTLESNAKE

SUNSET RIDGE

"The Electric Broom Cupboard's annual festival of original music. Line-up includes Stevie & The Masquerades, The Diamond Family Archive, Design, Ambush, Dirtstew, Dub Liberators, Rattlesnake, and Utter Chaos."

14 July: Prince of Wales, HAM HILL, near Yeovil, Somerset, TA14 6RW. 1 - 8pm. Suggested donation £5 (all profits to the Dorset and Somerset Air Ambulance).

ZZBIRMINGHAM BIG BAND

5 July
The Hawthorns, 8 Northload Street,
Glastonbury BA6 9JJ. 8.30pm. 01458
831255. "Authentic blues and self-
penned songs with brass and strings."

'ARMONICO BEOWULF'

5 July
Lighthouse, 21 Kingland Road, POOLE,
BH15 1UG. 7.30pm. 01202 280000 /
lighthousepoole.co.uk. "Armonico
Consort's composer-in-residence Toby
Young sets the touching epic fantasy to
music. Written for soprano, choir, harp,
keyboards and children's choir, with
strong folk-pop influences and a
gripping script, Beowulf will entertain
the whole family."

THE NEW HARDY PLAYERS: 'FAR FROM THE MADDING CROWD'

5 and 6 July
Came House, WINTERBORNE CAME,
Dorchester, DT2 8NU. 6.30pm
(Saturday matinee 1.30pm). £15 /
£7.50. 01305 266926. See 4 July.

UK INTERNATIONAL BOOGIE WOOGIE FESTIVAL

5 - 7 July
Venues throughout STURMINSTER
NEWTON, Dorset.
ukboogiewoogiefestival.co.uk.

SHAFTESBURY FRINGE

5 - 7 July
Various locations in SHAFTESBURY,
Dorset. shaftesburyfringe.co.uk.
"Comedy, theatre, music and more."

CHRISTCHURCH MUSIC FESTIVAL

5 - 7 July
Various locations in CHRISTCHURCH,
Dorset. christchurchfestival.co.uk.

FROME FESTIVAL

5 - 14 July
Various venues throughout FROME,
Somerset. fromefestival.co.uk / 01373
453889. "Frome's impressive and
entertaining arts festival features an
eclectic mix of opera, pop, choral, jazz
and folk music, theatre, workshops,
exhibitions, films, walks and talks."

PARTY BY THE PARRETT

6 July
The Rec, KINGSBURY EPISCOPI,
Somerset, TA12 6AX. 1 - 11.30pm.
partybytheparrett.co.uk.

MUSIC STUDIO
VENUE
ACCOMMODATION
WILDLIFE AND FARM

MILL FARM MUSIC
BRADFORD ABBAS, DORSET
WWW.MILLFARM.DORSET.COM
01935 413168



HOLY MOLY & THE CRACKERS

"In the perfect collision of rowdy tunes, pumping danceability and compelling storytelling, expect a medley of original songs and old time drinking tunes, both hilarious and thrilling, and sure to entertain!"

26 July: The Exchange, STURMINSTER NEWTON, DT10 1FH. 7.30pm. £10 / £7. 01258 475137 / artsreach.co.uk.

27 July: Village Hall, HALSTOCK, BA22 9SG. 7.30pm. £10 / £7. 01935 891744 / artsreach.co.uk.



'REVELATIONS'

6 July
Lighthouse, 21 Kingland Road, POOLE, BH15 1UG. 8pm. 01202 280000 / lighthousepoole.co.uk. "James Rowland struggles to come to terms with love, death, God and chicken nuggets after his best friends ask him for his sperm in order to start a family. An epic show, Revelations combines drama, comedy and song from one of the UK's most acclaimed storytellers."

THE TAKE THAT EXPERIENCE

6 July
Bridport Arts Centre, 9A South Street, BRIDPORT, DT6 3NR. 7.30pm. £23.50. 01308 424204 / bridport-arts.com.



'MASS EPIDEMIC HYSTERIA'

6 July
The Pound Arts Centre, Pound Pill, CORSHAM, SN13 9HX. 7.30pm. £12 / £10. 01249 701628 / poundarts.org.uk. "The Outbound Project explore the unexplained phenomenon of mass epidemic hysteria."

SWEET HONI

6 July
The Beehive, Dowell Street, HONITON, EX14 1LZ. 7.30pm. £10. 01404 384050 / beehivehoniton.co.uk. "Honiton's rock and soul community choir."

ABBOTSBURY SUMMER FAMILY FESTIVAL

6 July
Subtropical Gardens, ABBOTSBURY, Dorset. 1.30pm. abbotsbury-tourism.co.uk. 01305 871130. "Line-up includes Show of Hands, Tom Robinson, Track Dogs, Banter, Kelly Oliver."

'HALKA'

9 July
Lighthouse, 21 Kingland Road, POOLE, BH15 1UG. 7.30pm. 01202 280000 / lighthousepoole.co.uk. "By turns the stage is transformed into the middle of the desert, a crowded public square, a magical night-time dance and by a crier

calling the faithful to prayer as the 14 young acrobats and musicians create an energetic spectacle that hums with the sights and sounds of Moroccan street life."

RICHARD JAMES: 'SOUTH WEST COAST LAUGH'

9 July
The Lyric, BRIDPORT, DT6 3LX. 8pm. the-lyric.com. Comedy.

'MALLETS'

11 July
Dorchester Arts, The Corn Exchange, High East Street, DORCHESTER, DT1 1HF. 7.30pm. £10 / £8. 01305 266926 / dorchesterarts.org.uk. "Mallets takes place on a prissy perfect croquet lawn in middle England, as the most tranquil of summer's afternoons is forced to pay witness to a bloodthirsty grudge match between two rival couples. It's a ruthless, marital comedy that is both darkly funny and little bit sad - all washed down with a good glug of Pimm's."



HUNGRYTOWN

11 July
Lighthouse, 21 Kingland Road, POOLE, BH15 1UG. 8pm. 01202 280000 / lighthousepoole.co.uk. "Rebecca Hall and Ken Anderson were introduced to folk music when a close friend who died young entrusted to them her collection of 1960s folk albums and guitar."

MATTHEW REES AND JOSH BERRY

12 July
Bridport Arts Centre, 9A South Street, BRIDPORT, DT6 3NR. 8pm. £13. 01308 424204 / bridport-arts.com. Comedy.

'THERESA MAY'S FAREWELL TOUR'

12 July
The Lyric, BRIDPORT, DT6 3LX. 8pm. the-lyric.com. "Drag show."

Every job starts with a blank canvas.

At AztecMedia we have over 25 years experience in design and marketing. So whether you're an independent artist needing a website or a large venue looking for promotional material, everything we do is tailored to suit who you are.

aztecmedia
born to be creative®

01935 477 073 • AztecMedia.eu





ALISTAIR MCGOWAN: INTRODUCTIONS TO CLASSICAL PIANO

"Alistair McGowan is a hugely popular impressionist, stand-up comedian, actor, writer... and latterly, pianist. After the success of 'The Piano Album' Alistair is on tour with this tremendous show which brings all his talents together. Expect a lot of beautiful music (with the odd mistake!) and more than a sprinkling of his trademark impressions."

5 July: Dorchester Arts, The Corn Exchange, High East Street, DORCHESTER, DT1 1HF. 7.30pm. £17 / £15. 01305 266926 / dorchesterarts.org.uk.

MIRACLE THEATRE: 'A PERFECT WORLD'

12 July
Maumbury Rings, 17 Maumbury Road, DORCHESTER, DT1 1QN. 6.30pm. £13 / £11. 01305 266926 / dorchesterarts.org.uk. "The story of a feisty young woman who ventures into a 'Boys Own' world of undiscovered jungles, treasure maps, campfires and penknives on an action-packed adventure. Is this tranquil place the best of all possible worlds? Or is it all too good to be true? A rollicking music-filled adventure making the most of the great outdoors this summer!"

MIKE DENHAM & THE SUNSET CAFE STOMPERS

12 July
Ilminster Arts Centre, The Meeting House, East Street, ILMINSTER, TA19 0AN. 8pm. £16. 01460 54973 / themeetinghouse.org.uk. "Traditional jazz."

PRIDDY FOLK FESTIVAL

12 - 14 July
Priddy Green, PRIDDY, Somerset, BA5 3BB. priddyfolk.org.

ONCE UPON A TIME IN THE WEST

12 - 14 July
Deepest WILTSHIRE (near Trowbridge and Westbury). outwestfestival.co.uk. "Good value, small scale, big fun."

WONDER FIELDS

12 - 15 July
Great Fulford, DUNSFORD, Exeter, Devon, EX6 7AJ. wonderfields.co.uk.

BUDLEIGH MUSIC FESTIVAL

12 - 20 July
BUDLEIGH SALTERTON, Devon. budleighmusicfestival.co.uk. "Classical music on the Jurassic coast."

SOMERSTOCK

13 July
Recreation Ground, SOMERTON, Somerset. somerstock.com. "Line-up includes Toploader, The Decatonics, Black Friday, Ben Waters."

SOUND CHECK

VISUAL RADIO ARTS

Love watching LIVE bands for FREE?
Bands play LIVE in our studio and we VIDEOSTREAM to [Facebook.com/visualradioarts](https://www.facebook.com/visualradioarts) and visualradioarts.co.uk



SUNSET RIDGE

SUNDAY 14 JULY 2019

STEVIE & THE
MASQUERADES
THE DIAMOND
FAMILY ARCHIVE
DUB LIBERATORS
AMBUSH DIRTSTEW
RATTLESNAKE
UTTER CHAOS
+ DJ ALAN FLINT

PRINCE OF WALES • HAM HILL • SOMERSET TA14 6RW
1 - 8 PM • FREE ENTRY • SUGGESTED DONATION £5
ALL PROFITS TO DORSET AND SOMERSET AIR AMBULANCE



OCTAGON THEATRE

WELSH NATIONAL OPERA: DON PASQUALE

THURSDAY 11 JULY
Follow the exploits of Don Pasquale in this riotous new version of Donizetti's classic comic opera.

WHY MUMMY DOESN'T GIVE A ****!

SATURDAY 7 SEPTEMBER
Join Gill Sims as she is interviewed about her blog, books, character and much more!

THE BIG CHRIS BARBER BAND 2019
THURSDAY 12 SEPTEMBER
Chris Barber OBE (87) is one of the last British Jazz legends around and an icon of traditional jazz in the United Kingdom.

STICK MAN
SATURDAY 14 + SUNDAY 15 SEPTEMBER
Touching, funny and utterly original adaptation of Julia Donaldson and Axel Scheffler's Stick Man.

ONLY FOOLS AND BOYCIE
TUESDAY 17 SEPTEMBER
Enjoy an intimate evening with John Challis, one of the nation's greatest comedy actors, best known as Boycie in BBC1's Only Fools and Horses.

BOX OFFICE: 01935 422884
BOOK ONLINE:
www.octagon-theatre.co.uk
OCTAGON THEATRE
Hendford, Yeovil, Somerset BA20 1UX



Lighthouse

POOLE'S CENTRE FOR THE ARTS



Thu 11 July

HUNGRYTOWN

After more than a decade of world-wide touring and three album releases, folk duo Rebecca Hall and Ken Anderson, have earned a reputation for the quality and authenticity of their songwriting.

8pm | THE SHERLING STUDIO



Wed 24 July

DALLOWAY

Dyad Productions' adaptation of Virginia Woolf's celebrated map of hearts, minds and memories offers a magical and compellingly feminist response to the aftermath of the First World War.

8pm | THE SHERLING STUDIO

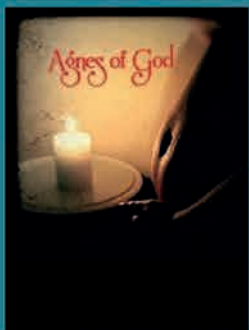


Thu 12 – Sun 15 September

FAULTY TOWERS: THE DINING EXPERIENCE

Basil, Manuel and Sybil bring a healthy dose of mayhem to Lighthouse. With two hours of comedy, three courses of food, and five-star reviews, expect chaos, laughs, and a brilliant night out.

12.30pm & 7.30pm | THE BEACON

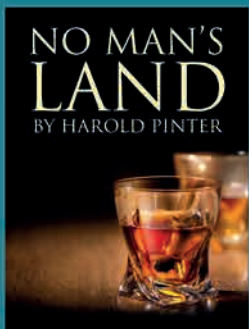


Thu 19 – Sat 21 September

AGNES OF GOD

Arena Theatre returns with John Pielmeier's dramatic play which tells the story of a novice nun who gives birth and insists that the child was the result of a virgin conception.

2pm & 8pm | THE SHERLING STUDIO



Thu 19 – Sat 21 September

NO MAN'S LAND

A chance meeting between two elderly writers in a North London pub leads to an alcohol-fuelled night of reminiscences and verbal sparring. Harold Pinter's most atmospheric play comes to life on our stage.

2.30pm & 7.45pm | THEATRE

01202 280000

www.lighthousepoole.co.uk



PERFORMANCE



THE DEATH SHOW

"Drawn together by their shared fear of death Lucy Nicholls and Antonia Beck embark on a journey of discovery, contemplation and courage as they discover why talking about death is ultimately life-affirming."

12 July: Lighthouse, 21 Kingland Road, POOLE, BH15 1UG. 8pm. 01202 280000 / lighthousepoole.co.uk.

BSO: 'INDOOR OUTDOOR FEST 19'

13 July
Lighthouse, 21 Kingland Road, POOLE, BH15 1UG. 3 and 7.30pm. 01202 280000 / lighthousepoole.co.uk. "Join the Bournemouth Symphony Orchestra for a thrilling concert that generates the atmosphere of an outdoor classical music spectacular without the worry of the weather. The relaxed setting, chill-out area and no pyrotechnics are suitable for, but not limited to, concertgoers with autistic spectrum conditions, those with sensory, communication or learning difficulties and anyone else who would benefit from a less formal environment."

'COASTAL COMEDY'

13 July
Lighthouse, 21 Kingland Road, POOLE, BH15 1UG. 8pm. 01202 280000 / lighthousepoole.co.uk. "Stuart Goldsmith gets his teeth into love, romance and the downside of getting what you want. Also billed are Johnny Wardlow and Rick Kiesewetter with regular compere Adrienne Coles."

PHOSPHOROS THEATRE: 'PIZZA SHOP HEROES'

13 July
The Pound Arts Centre, Pound Pill, CORSHAM, SN13 9HX. 7.30pm. £12 / £10. 01249 701628 / poundarts.org.uk. "Four your men working your average shift in your average pizza shop take us on a journey across time and continents to show how extraordinary they are."

JAMSEK AND MIN YOUNG BAE

17 July
The Pound Arts Centre, Pound Pill, CORSHAM, SN13 9HX. 1pm. £7.50 / £5. 01249 701628 / poundarts.org.uk. Violin and piano recital.

'THE LIFE AND TIMES OF DOCTOR ROBERTS'

19 July
Bridport Arts Centre, 9A South Street, BRIDPORT, DT6 3NR. 11am and 7.30pm. £14 / £10. 01308 424204 / bridport-arts.com. "An entertaining theatrical inquiry into the medical practices of Georgian Bridport."

THE LOREANS!

19 July
Bridgwater Arts Centre, Castle Street, BRIDGWATER, TA6 3DD. 8pm. £10. bridgwaterartscentre.co.uk. "Italian doo-wop, swing and rock'n'roll!"

THE CRAIG MILVERTON TRIO

19 July
Ilminster Arts Centre, The Meeting House, East Street, ILMINSTER, TA19 0AN. 8pm. £18. 01460 54973 / themeetinghouse.org.uk.

'THE PAPER MOON'

19 July
The Pound Arts Centre, Pound Pill, CORSHAM, SN13 9HX. 11am and 2pm. £6. poundarts.org.uk. "A gentle first adventure into theatre for babies, young children and their grown ups."

CHAGSTOCK FESTIVAL

19 and 20 July
Whiddon Down, near CHAGFORD, Devon. chagstock.info.



'MOONBURY RINGS'

19 - 21 July
Maumbury Rings, 17 Maumbury Road, DORCHESTER, DT1 1QN. 01305 266926 / dorchesterarts.org.uk. "Fifty years ago - man went to the moon! Dorchester is celebrating with a weekend of free lunar-themed events, all taking place under the internationally famous 'Museum of the Moon' - a seven metre diameter giant moon, suspended and shining over Maumbury Rings. The weekend features a musical performance by 500 children from Dorchester schools, a space-themed open-air cinema event and a science family fun day."

PERFORMANCE

BRISTOL HARBOUR FESTIVAL

19 - 21 July

Harbourside, BRISTOL. Free entry.
bristolharbourfestival.co.uk.

TROWBRIDGE FESTIVAL

19 - 21 July

Stowford Manor Farm, WINGFIELD,
near Trowbridge, BA14 9LH.
trowbridgefestival.co.uk. "Line-up
includes Emily Barker, Coco and The
Butterfields, Gigsrunner."

TOLPUDDLE MARTYRS' FESTIVAL

19 - 21 July

TOLPUDDLE, Dorset.
tolpuddlemartyrs.org.uk.

THE GODNEY GATHERING

20 July

Garslade Farm, GODNEY, Glastonbury,
BA5 1RX. thegodneygathering.com.

BRIDGWATER QUAYSIDE FESTIVAL

20 July

Various locations in BRIDGWATER.
11am - 5pm.
bridgewaterquaysidefestival.co.uk.

RHYS JAMES + SARAH KEYWORTH

20 July

The Pound Arts Centre, Pound Pill,
CORSHAM, SN13 9HX. 8pm. £10.
poundarts.org.uk. Comedy.

'DALLOWAY'

23 July

Bridport Arts Centre, 9A South Street,
BRIDPORT, DT6 3NR. 7.30pm. £16.
01308 424204 / bridport-arts.com.
"1923: The war is over. This adaptation
of Virginia Woolf's celebrated map of
hearts, minds and memories offers a
compellingly feminine response to the
aftermath of the First World War."

'DALLOWAY'

24 July

Lighthouse, 21 Kingland Road, POOLE,
BH15 1UG. 8pm. 01202 280000 /
lighthousepoole.co.uk. See 23 July.



LOU SANDERS + PIERRE NOVELLIE

25 July

The Pound Arts Centre, Pound Pill,
CORSHAM, SN13 9HX. 8pm. £10.
01249 701628 / poundarts.org.uk.
Comedy.



CLARE HAMMOND

"The incredibly talented pianist Clare Hammond, who is recognised for the virtuosity and authority of her performances, will be entertaining audiences in Devon, Dorset and Somerset with a powerful programme that includes the world premiere of Michael Zev Gordon's Diary Pieces, as well as sonatas by Josef Mysliveček and Rachmaninov."

4 July: Wellhayes Vineyard, CLAYHANGER, Tiverton, Devon, EX16 7NY. 6.45pm. £15. 01398 361612.

5 July: Bridport Arts Centre, South Street, BRIDPORT, DT6 3NR. 11am. £12. 01308 424204 / bridport-arts.com.

5 July: Ilminster Arts Centre, The Meeting House, East Street, ILMINSTER, TA19 0AN. 7.30pm. £15. 01460 54973 / themeetinghouse.org.uk.

6 July: The Dance House, Gouldsbrook View, North Street, CREWKERNE, TA18 7AL. 6.45pm. £15.
concertsinthewest.org.

KD LANG + THE GRIGORYAN BROTHERS

25 July

Lighthouse, 21 Kingland Road, POOLE,
BH15 1UG. 7.30pm. 01202 280000 /
lighthousepoole.co.uk. "Legendary
Canadian singer songwriter."

SOTAVENTO BIG BAND

25 July

Ilminster Arts Centre, The Meeting
House, East Street, ILMINSTER, TA19
0AN. 8pm. £18. 01460 54973 /
themeetinghouse.org.uk. "Jazzy Latin
American rhythms."

CHRIS DIFFORD + ARCELIA

25 July

Chapel Arts, St James Memorial Hall,
Avon, Lower Bridge Walls, BATH, BA1
1QR. 8pm. £18. 01225 461700 /
arcelia.co.uk.

CAMP FESTIVAL

25 - 28 July

Lulworth Castle, LULWORTH, Dorset.
campfestival.net / 0844 888 0444.
"The UK's most loved family festival,
returns with a Heroes vs Superheroes
theme, fantastic family fun and an out-
of-this-world line-up."

WOMAD

25 - 28 July

Charlton Park, near MALMESBURY,
Wiltshire. womad.co.uk.

FARMFEST

25 - 27 July

Gilcombe Farm, BRUTON, Somerset,
BA10 0QE. farmfestival.co.uk.

THE ANTLER CEILIDH BAND

26 July

Bocabar, The Red Brick Building,
Morland Road, GLASTONBURY, BA6
9EW. 7.30pm. £5. 01458 440558 /
glastonburybocabar.co.uk.

www.beerandbluegrass.co.uk

PERFORMANCE

SQUASHBOX THEATRE: 'CURIOUS CREATURES'

26 July

Corn Exchange, BLANDFORD, DT11 7AG. 2.30pm. £6 / £5. 01258 480698 / artsreach.co.uk. "Using puppets, comedy and live music, plus lots of amazing natural history facts, Squashbox Theatre uncover the mysteries of the animal kingdom."

ZAHRA O'SHEA

26 July

The Pound Arts Centre, Pound Pill, CORSHAM, SN13 9HX. 8pm. Free entry. 01249 701628 / poundarts.org.uk. "Hailing from Ireland's wild Atlantic west, Zahra fuses a range of genres including folk, jazz, blues, soul and reggae."

THE SPOOKY MEN'S CHORALE

26 July

Dorchester Arts, The Corn Exchange, High East Street, DORCHESTER, DT1 1HF. 7.30pm. £22 / £20. 01305 266926 / dorchesterarts.org.uk. "A winning spectrum of Georgian songs, pindrop-beautiful ballads, highly inappropriate covers, and immaculate man anthems."



BEER AND BLUEGRASS

26 and 27 July

Victoria School, 12 Lindsay Road, POOLE, BH13 6AS. beerandbluegrass.co.uk. "Beer and Bluegrass returns to celebrate its 5th Birthday and this year includes no fewer than seven American and Irish top quality Bluegrass and Americana acts. Line-up includes See Hawks in LA, Rachel Harrington (above), Mountain Firework Company, Massey Ferguson, Local Honeys, Bog Standard Stringband, Resonant Rogues, JD Hobson, Gwenifer Raymond, Orange Circus, Death and The Dancer and Mishra."



KABANTU

"Kabantu is an eclectic five-piece hailing from Manchester, who unravel new marriages of music from around the globe. Vocal harmonies from South Africa blend with everything from Celtic reels and Balkan folk music to Brazilian samba and beyond."

9 August: Village Hall, STUDLAND, BH19 3AE. 7.30pm. 01929 450204. £10 / £7. artsreach.co.uk.

10 August: Cecil Memorial Hall, CRANBORNE, BH21 5QB. 7.30pm. £16 / £8. 01725 517607 / artsreach.co.uk.

BRIDPORT FOLK FESTIVAL

26 - 28 July

Town Centre, BRIDPORT, Dorset. bridportfolkfestival.com.

SOMERSET CHAMBER CHOIR

27 July

Wells Cathedral, Cathedral Green. WELLS, BA5 2UE. 7pm. £25 / £10. somersetchamberchoir.org. "One of the world's foremost interpreters of the evangelist's role, James Gilchrist, is joined by one of the UK's finest baroque orchestras, The Musical and Amicable Society."

'VOICE OF THE HEART'

27 July

The Exchange, Old Market Hill, STURMINSTER NEWTON, DT10 1FH. 7.30pm. £18.50. 01258 475137 / stur-exchange.co.uk. "Stunning show celebrating the music of The Carpenters."

SQUASHBOX THEATRE: 'CURIOUS CREATURES'

27 July

Village Hall, MARTINSTOWN, DT2 9LF. 2.30pm. £6 / £5. 01305 889963 / artsreach.co.uk. See 26 July.

'COLLECT'

28 July

Electric Place, 35 South Street, BRIDPORT, DT6 3NY. 6pm. £9 / £8.50. electricpalace.org.uk. "An evening of live contemporary dance with choreography by award winning dance artists."



'GOBBY'

28 July

Exeter Phoenix Studio, Gandy Street, EXETER, EX4 3LS. 7pm. £8. 01392 667080 / exefringe.co.uk. "Five parties. One big mouth. A biting and heartfelt comedic odyssey about what it really means to be loud."

'DIRTY DANCING'

29 July

Lighthouse, 21 Kingland Road, POOLE, BH15 1UG. 7.30pm. 01202 280000.

'LAUGHS AT THE LYRIC'

30 July

The Lyric, BRIDPORT, DT6 3LX. 8pm. the-lyric.com. Comedy.

MIRACLE THEATRE: 'A PERFECT WORLD'

1 August

Springhead Gardens, FONTMELL MAGNA, SP7 0NU. 7pm. £12 / £8. 01747 811853. See 12 July.

MIRACLE THEATRE: 'A PERFECT WORLD'

2 August

Higher Orchard, SANDFORD ORCAS, DT9 4RP. 7pm. £10 / £8. 01963 220208 / artsreach.co.uk. See 12 July.

PETE ALLEN JAZZ BAND

2 August

Ilminster Arts Centre, The Meeting House, East Street, ILMINSTER, TA19 0AN. 8pm. £20. 01460 54973.

OUTCIDER FESTIVAL

2 - 4 August

Fernhill Farm, COMPTON MARTIN, Somerset. outciderfestival.com. "A real West Country experience of cider and live music at this 500 capacity festival on a working farm just south of Bristol. Line-up includes Alabama 3, Beans On Toast, Bar Stool Preachers, Back To The Planet, Skimmity Hitchers."

4 COLOURS
to make a
THOUSAND
SHADES

#COLOURINGYOURFUTURE

S&G
STEPHENS & GEORGE
PRINT GROUP

WWW.STEPHENSANDGEORGE.CO.UK

01685 388888 | SALES@STEPHENSANDGEORGE.CO.UK

GOAT MILL ROAD | DOWLAIS | MERTHYR TYDFIL | CF48 3TD

FOLLOW US ON TWITTER @SandGPrintGroup

PERFORMANCE



THE BIRD SHOW

"A madcap and touching show about birds facing changes to their habitat, with music and puppetry."

4 August: The Wardrobe Theatre, The Old Market Assembly, 25 West Street, Old Market, BRISTOL, BS2 0DF. 11am and 2pm. £8. 01179 020344 / thelastbaguette.com.

MIRACLE THEATRE: 'A PERFECT WORLD'

3 August
KIMMERIDGE BAY, BH20 5PF. 7pm.
£10 / £8. 01305 269512 /
artsreach.co.uk. See 12 July.

HARRY SKINNER AND DAVE SAUNDERS

4 August
Bere Cider Barn, BERE, near Aller,
LANGPORT, TA10 0QX. 5pm. £5.
07770 783713. "Blues and cider."

'PRIDE AND PREJUDICE'

4 August
Somerset Rural Life Museum,
Chilwell Street, GLASTONBURY, BA6
8DB. 5pm. £16 / £11. 01458 831197 /
swheritage.org.uk. "Take a step back in
time with Chapterhouse Theatre
Company to meet Elizabeth Bennet,
Jane Austen's notorious heroine.
Brought to life by award-winning writer
Laura Turner, this adaptation will be a
joy. Join friends and family for an
evening of theatre beneath the stars,
basking in the glow of this timeless
classic."

'ELMER THE ELEPHANT'

6 August
Bridport Arts Centre, 9A South Street,
BRIDPORT, DT6 3NR. 2pm. £16. 01308
424204 / bridport-arts.com.

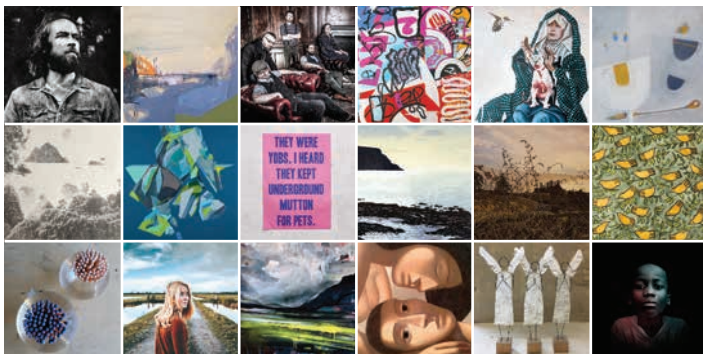
'THE WIZARD OF OZ'

7 - 10 August
Salisbury Playhouse, Malthouse Lane,
SALISBURY, SP2 7RA. 7pm (Saturday
matinee 2.15pm). £15. 01722 320333 /
wiltshirecreative.co.uk. "Stage 65 Youth
Theatre present a magical adventure
for all ages."



OPERA ANYWHERE: 'PIRATES OF PENZANCE'

8 August
Nothe Fort, Barrack Road,
WEYMOUTH, DT4 8UF. 6pm. £16 /
£14. dorchesterarts.org.uk. "Join us at
seaside for the jolliest maritime musical
comedy of all time in the wonderful
setting of Weymouth's Nothe Fort. A
fantastic family friendly mix of comic
characters, witty dialogue, and great
tunes. Perfect entertainment for a
summer's evening... Bring a chair or
blanket!"



Follow **evolvermagazine** on Instagram

WELLS Festival of Literature



From Thomas Cromwell...
...to Roger McGough

with Nicci Gerrard, Georg Friederic Handel,
Melvyn Bragg, William Shakespeare,
Tracey Thorn, Leonardo da Vinci, Chris Patten,
Anne of Cleves, Peter Hennessy, Jamal Kashoggi,
Jim Al Khalili, Heloise and Abelard,
Adam Rutherford...

...and other scientists, poets, historians,
commentators and writers along the way

Tickets available from 22 July

wellsfestivalofliterature.org.uk

01749 834483

18-26
October
2019

CAFÉ

@ SALISBURY ARTS CENTRE

THE IDEAL PLACE FOR A RELAXING LUNCH

SALISBURY ARTS CENTRE

WILTSHIRE CREATIVE



CAFÉ



LIVE MUSIC



COMEDY



VISUAL ARTS

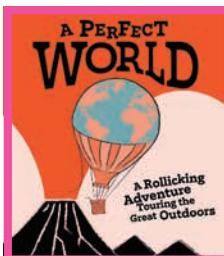
**SALISBURY ARTS CENTRE IS OPEN FROM
10AM - 3PM MONDAY TO SATURDAY**
(and also for Sunday events)

Just a five minute walk from the Market Square, it's a great place to
unwind, have a coffee or bite to eat, meet friends, have a meeting
or listen to live music surrounded by this dramatic building.

To find out more about events at Salisbury Arts Centre, please visit
www.wiltshirecreative.co.uk

BEDWIN STREET, SALISBURY, SP1 3UT

DorchesterARTS OUTDOOR THEATRE



A PERFECT WORLD

MIRACLE THEATRE

FRIDAY 12 JULY, 7.30pm

An action-packed, rollicking, music-filled adventure!



THE PIRATES OF PENZANCE

OPERA ANYWHERE

THURSDAY 8 AUGUST, 7pm

Gilbert and Sullivan's perennial favourite presented in the spectacular setting of Weymouth's Nothe Fort



THE LEGEND OF KING ARTHUR

BOXTREE PRODUCTIONS

SUNDAY 18 AUGUST, 5pm

Pack up a picnic and join us in the open air to enjoy this classic tale of Arthur, a sword and the Knights of the round table.

01305 266926

www.dorchesterarts.org.uk

Charity No. 1015546



PERFORMANCE

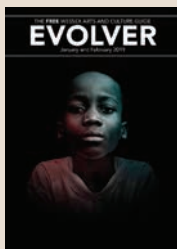
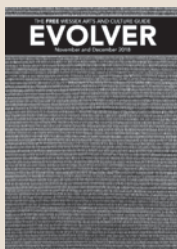
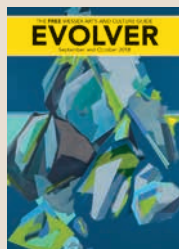


JULIE FOWLES

SIDMOUTH FOLK FESTIVAL

"The Sidmouth Folk Festival offers an unmissable eight days of the very best folk music, dance and song in a unique location. The stunning East Devon regency coastal town bursts into colourful life for the first week in August each year, attracting tens of thousands of visitors to over 700 events with diverse and universal appeal. Join us for some amazing headline concerts, lively roots parties, intimate sessions, ceilidhs and folk dancing, storytelling, fun family entertainment and youth-centred sessions, hands-on workshops and spectacular dance displays, the best in South West crafts and the tastiest of local food and drink. Line-up includes: Lindisfarne, Ralph McTell, Richard Thompson, Julie Fowles, Spooky Men's Chorale, Seth Lakeman, Peatbog Faeries, Steve Knightley and rising stars like Lisa O'Neill and Mama's Broke.

2 - 9 August: Venues throughout SIDMOUTH, East Devon.
sidmouthfolkfestival.co.uk / 01395 577952.



SUBSCRIBE TO EVOLVER

£24 for 6 issues starting with EVOLVER 113 (September / October 2019 issue)

NAME
ADDRESS
POSTCODE

Send cheque (payable to 'Evolver Media') to:
 EVOLVER MEDIA, 8 BUCKLAND ROAD, PEN MILL TRADING ESTATE,
 YEOVIL, SOMERSET BA21 5EA



MATT CARTER SEPTET

9 August

Ilminster Arts Centre, The Meeting House, East Street, ILMINSTER, TA19 0AN. 8pm. £16. 01460 54973. "Pianist Matt Carter and his new band of award-winning young musicians deliver a high octane performance of original compositions, jazz standards, gospel and funk."

MATT CARTER SEVEN

10 August

Pine Hall, Lyme Regis Baptist Church, Silver Street, LYME REGIS, DT7 3NY. 7.30pm. £14. 01297 442138 / thelittleboxoffice.com. See 9 August.

'ABBA FOREVER'

10 August

Bridport Arts Centre, 9A South Street, BRIDPORT, DT6 3NR. 7.30pm. £24.50. 01308 424204 / bridport-arts.com.

BURTON BRADSTOCK FESTIVAL OF MUSIC AND ART

10 - 18 August

Village Hall and Church, BURTON BRADSTOCK, Dorset, DT6 4QS. burtonbradstockfestival.com / 01308 897203.

PURBECK VALLEY FOLK FESTIVAL

15 - 18 August

Purbeck Valley Farm, CORFE CASTLE. purbeckvalleyfolkfestival.co.uk.

BEAUTIFUL DAYS

16 - 18 August

Escot Park, near OTTERY ST MARY, Devon. beautifuldays.org.

'THE LEGEND OF KING ARTHUR'

18 August

Maumbury Rings, 17 Maumbury Road, DORCHESTER, DT1 1QN. 4pm. £11 / £9. dorchesterarts.org.uk. "Pack up a picnic and join us in the open air to enjoy this classic tale of Arthur, a sword and the Knights of the Round Table. Inventive staging, original songs and magical storytelling."

PERFORMANCE

EDINGTON FESTIVAL OF MUSIC WITHIN THE LITURGY

18 - 25 August

The Priory Church, EDINGTON,
Wiltshire BA13 4QN. Free entry.
edingtonfestival.org.

CAUSLEY & COLDFIELD

21 August

The Beehive, Dowell Street, HONITON,
EX14 1LZ. 2pm. £5. 01404 384050 /
beehivehoniton.co.uk.

'FRANK SINATRA TRIBUTE'

23 August

Iminster Arts Centre, The Meeting
House, East Street, ILMINSTER, TA19
0AN. 8pm. £20. 01460 54973 /
themeetinghouse.org.uk. "A magical
evening of Frank's best loved songs
with the Craig Milverton Trio and
Martin Dale on tenor sax."

RIVER COTTAGE FESTIVAL

24 and 25 August

River Cottage HQ, Park Farm, Trinity
Hill Road, MUSBURY, Axminster, EX13
8TB. rivercottage.net.

'LAUGHS AT THE LYRIC'

27 August

The Lyric, BRIDPORT, DT6 3LX. 8pm.
the-lyric.com. Comedy.

PURBECK INTERNATIONAL CHAMBER MUSIC FESTIVAL

29 August - 1 September

Various locations, ISLE OF PURBECK.
purbeck-chambermusic.org.uk. "Line-
up includes Natalie Clein, Jennifer Pike,
Lana Tratovšek, Max Baillie, Gareth
Lubbe, Guy Johnston, Marvin Dillmann,
Elizabeth Kenny, Abel Selacoe, Olivia
Ray, Katya Apekisheva, Thomas Larcher,
Philip Mansel."

END OF THE ROAD

29 August - 1 September

Larmer Tree Gardens, TOLLARD
ROYAL, Dorset, SP5 5PY.
endoftheroadfestival.com.

VIMALA ROWE AND JOHN

ETHERIDGE

30 August

Iminster Arts Centre, The Meeting
House, East Street, ILMINSTER, TA19
0AN. 8pm. £16. 01460 54973.

UPTON NOBLE BEER & CIDER FESTIVAL

30 and 31 August

UPTON NOBLE, Somerset.
unfestival.co.uk.

LYME FOLK WEEKEND

30 August - 1 September

Various venues in LYME REGIS, Dorset.
lymefolk.com. "Great music and
dancing on the Jurassic Coast."



HELEN OTTAWAY

LISTEN

This summer, Black Swan Arts is stretching out into new areas and is excited to present *Listen*, a summer season of sound art curated by local composer and sound artist Helen Ottaway. *Listen* will take place in and around the buildings of Black Swan Arts and in other public and private spaces in Frome. The season will include exhibitions, installations, workshops, performances, sound walks and talks, and a 'listening hub' where you can delve into all kinds of sonic worlds.

Listen will host artists, composers and musicians from all over the UK as well as celebrating Frome's rich vein of local talent. The Long Gallery will house *Singing The World: The Dawn Chorus* by Mike Collier and friends, music and prints inspired by birdsong. New site-specific installations have been commissioned from Scanner (AKA Robin Rimbaud) and Artmusic. Award winning British composer / performer Errollyn Wallen will present a concert at Christ Church. At The Silk Mill you can hear electronic music sets from Scanner and Joseph Hyde. Listening while exploring the town will be the focus of two new sound walks by Satsymph, who will create a geo-located sound walk based on memories of working life in Frome accessed through an app on your phone, and Poetry in Motion will create a walk following in the footsteps of workhouse reformer and writer Emma Sheppard with readings along the route.

A series of talks and discussions will feature a wealth of fascinating artists including composer Jem Finer, multi-instrumentalist and musicologist Michael Ormiston, educationalist and saxophonist Nick Sorensen and multi-disciplinary sound artist Jane Pitt. Throughout *Listen* will run a stream of ad hoc and pop up events including a rig of instruments made from recycled materials for all the family to enjoy, musicians playing their responses to graphic art notation, DJ sessions in the Black Swan Arts courtyard and film screenings of fascinating sound and visual work from across the world.

Listen is an invitation to explore your surroundings through sound, Bring your ears and an open mind to Frome this summer for an aural extravaganza.

20 July - 1 September: Black Swan Arts and various venues, FROME. blackswanarts.org.uk.

BRIDPORT
TIMES
A MONTHLY CELEBRATION OF PEOPLE, PLACE AND PURSUE

OUT NOW
AND ONLINE

bridporttimes.co.uk

CLASSIFIEDS

OPPORTUNITIES

● 167 Annual Open Exhibition. The Royal West of England Academy holds an Annual Open Exhibition, now in its 167th year. As the name suggests, anyone can enter their work for this mixed discipline show - previous years have included painting, drawing, printmaking, photography, film, sculpture and illustration, and attracted entries from artists across the UK and beyond. A selection panel assesses every entry and last year 634 works by 413 artists made it into the final exhibition. All work is for sale and the exhibition attracts art-lovers and art-buyers from far and wide. Submissions for artists will be open from 2 July - 20 August 2019 via our online submission system: shop.rwa.org.uk/collections/events/products/167-annual-open-exhibition.

● Call for New Members: The Black Swan Guild is an exciting new association of makers at Black Swan Arts and furthers their commitment to nurture and showcase high-quality work from the widest possible range of artists and craftspeople. Quality will take precedence over other factors such as qualifications, experience, status and geographic location. Online submissions for new membership are welcomed between 23 August and 9 September. More info: www.blackswanarts.org.uk.

● The Mothership: Artist Residencies in Rural Dorset 2019. The Mothership project, which emerged in 2016 in rural Dorset from the cosmic skies of rural loneliness juxtaposed with the contained space of the domestic sphere, is an invitation for the chance encounters of the urban art world to occur in this unlikely location, a house at the edge of a wood. The Mothership is an offering of time and space for artists without pressure to produce anything particular. This is a social art project, an experiment in autonomy and scale, exploring the relationship between host and guest and the exchange that may occur. This is an unpaid residency opportunity and a fee is charged to cover overheads. Deadline Friday 20 December 2019. Please see annabest.info/residencies/ for further information on how to apply.

● Calling all Somerset Art Weeks participants! If you'd like to advertise your venue in Evolver's September / October issue Somerset Art Weeks supplement please email simon@evolver.org.uk and ask for details of our reduced rates, as negotiated on your behalf by our Evolver Sponsor Somerset Art Weeks. We will also be selecting work by our SAW advertisers for the magazine's front cover, our supplement front cover and our editorial features. Deadline: Wednesday 31 July.

● Call for Entries: Black Swan Art Open 2019, 18 October - 26 November. Judges - Robert Devereux, Katherine Fry, Luke Jerram, Jaqueline Moore, Sandra Porter. Prizes worth over £3,000 including £1,000 First Prize supported by Hauser & Wirth Somerset, £1,000 Sue Conrad prize, £500 The Lindy Pelley Prize and Peoples' Choice Award of £250. Deadline 13 September. All info and submission details: www.blackswanarts.org.uk.

WORKSHOPS AND COURSES

● Photography Workshops, Ilminster. Workshops in photography available. Traditional from 35 mm to 5 x 4, darkroom developing and printing. Tuition on exposure and correct negative. Also digital basics and advanced. One to one or group days. Justin Orwin, e: orwinstudio@gmail.com.

● Flux'n'Flame Jewellery School: Now one of the largest independent jewellery schools in the UK offering an ever expanding range of traditional jewellery making courses from 1 day tasters, weekend courses and weekly classes to a 6 day Summer School and specialist masterclasses. Taught by professional jewellery designers and set in a beautiful purpose built workshop in the heart of the Dorset countryside near Milton Abbas. www.fluxnflame.co.uk. For more info please call Jesa on 01258 881690 / 07785 550771.

● Creative stone carving weekends in the beautiful Mendip Hills. Please look at my website for details and info: patrickbarkersculptor.co.uk.

● Residential Basketry and willow-work courses for beginners to advanced makers with traditional and contemporary willow artist Sarah Webb. Booking at www.halswaymanor.org.uk.

● Hand bookbinding workshops with Paul Taylor, an accredited Book and Paper Conservator of 32 years' experience, at Spiral Path Book Studio in Langport. Relaxed and informative bookbinding tuition in our studio, maximum 5 per class, introductory to advanced classes. Please see website for details (www.spiralpathbooks.uk) or email for details and enrolment form (info@spiralpathbooks.uk).

● Self Cultivation + Creative Practice. An intensive 3-day residential workshop on creative inquiry and mind / body cultivation. Held at a fully catered artists retreat in Powerstock, Dorset. www.artistselfcultivation.com / ryankiggell@me.com.

● Life Drawing, Exeter. Untutored sessions, Sundays 10am - 12.30pm. £9. 01392 273744 / adrian@afgwytatt.plus.com.

● Cyanotype Printing Workshops. Make gorgeous blue prints, lampshades, table lanterns. No previous skills needed. Location / time to suit you. Materials provided. From £25. 01305 837299 / www.craftcourses.com/providers/sunlight-blue-cyanotype-lampshade-workshops.

● Male life model based in Wimborne, Dorset looking for work. If interested, please email tomlloydfrancis@gmail.com or call 07985 374926.

● Bookbinding courses and workshops in Butleigh near Glastonbury. See book-love.wixsite.com/website for info.

● Wellbeing Retreats at Halsway Manor. Yoga, walking in the Quantocks and creative play with Tracey Roberts BWY. Mid-week residential in July and October. Details at www.halswaymanor.org.uk.

MISCELLANEOUS

● Sssh - We're Drawing..! Creative retreats for artists. Location: Aude, Pyrenees. Dates in October - by negotiation. Duration, 7 nights. Min 4, max 7 / 8 participants. Retreats aren't courses. They prioritise 'quiet', self-directed time using the studio workshop, the landscapes and other spaces for reading, writing, thinking. Optional tutorials, mentoring and practical support. Good walks and abundant nature on the doorstep. Alternative opportunities for small groups, or for holidays with use of workshop. To express interest and request details - E: jem.5@icloud.com.

● Books Wanted. We buy all types of books, particularly 20th century Art, Architecture and Design. Telephone Karen Jakobsen: 01258 471249.

● Very experienced and professional male model for life drawing, portrait, sculpture and photo shoots with large array of costumes and props. Car owner and willing to travel. Reasonable rates. Contact geoffreyallen3@gmail.com / 07816 997732.

● Wanted: Classical and Jazz LP records. Tel: 01458 834102 / 07704 229979 / email: tonyartony@aol.com.

● Experienced professional female model. Available in Poole and Bournemouth Area. Contact Lilly: 0780 4020 735.

● Life Model. Male, experienced, reliable, own car, travel anywhere, Dorset. Tutored / untutored. 07770 618089 or anu.now78@gmail.com.

● Deadline for Evolver 113 (September and October issue): Wednesday 7 August

FREE EVOLVER LISTINGS

Exhibition and performance listings should be emailed to: listings@evolver.org.uk

Please supply information (in upper and lower case) in the following order: Event. Date(s). Venue, address (including postcode). Times. Admission fee (if any). Contact number / website. Up to 30 words about the event.

EVOLVER CLASSIFIEDS

20p per word • Add £5 for BOX • Add £10 for RED BOX

1) Email to classifieds@evolver.org.uk

2) Send cheque (payable to 'Evolver Media') to:

EVOLVER CLASSIFIEDS, EVOLVER MEDIA, 8 BUCKLAND ROAD, PEN MILL TRADING ESTATE, YEOVIL, SOMERSET BA21 5EA

Foundation Degree Contemporary Fine Art Practice

CREATIVE & VISUAL ARTS
www.weymouth.ac.uk

WEYMOUTH COLLEGE

IN PARTNERSHIP WITH

UNIVERSITY OF PLYMOUTH

Foundation Degree Contemporary Photography Practice

APPLY NOW TO STUDY

GICLÉE PRINTS FROM PH MEDIA



A complete fine art prints service from A2 multi-level scanning or photography of artwork to packaging and fulfilment. All our colour accurate prints are produced to order and accredited to ArtSure® standards using a choice of museum grade archival paper and inks. Bespoke packaging and framing options are available. We also offer an online shop with no commission or web fees and we process payments that we forward to the client.

TO FIND OUT
MORE CONTACT:
Bill Davies
07702 193737
bill@phmedia.com
phmedia.com

PH PRINTS FROM PH MEDIA



framing, printing, installation

www.mount-art.co.uk | 01373 473894



FREE CULTURE + RESOURCES AND TEMPLATES FOR ARTISTS AND CREATIVES

THEARTSDEVELOPMENTCOMPANY.ORG.UK



Pictured: How to choose the right business model

Other resources include: how to build your website, printable year planners, invoice templates and more

Illustration by Bridie Cheeseman

THE ARTS
DEVELOPMENT
COMPANY

Culture+

Funded by:



European Union
European Regional
Development Fund



Supported using public funding by
**ARTS COUNCIL
ENGLAND**

EVOLVER SPONSORS AND OUTLETS



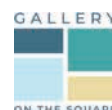
EVOLVER IS AVAILABLE FREE AT THE FOLLOWING WESSEX OUTLETS:

ABBOTSBURY: Dansel Gallery. **AXMINSTER:** Axminster Arts Café, Sublyme Café. **BATH:** Action for Hearing Loss, Art Salon, Bath Artists' Studios, Beaux Arts, David Simon Gallery, Edgar Modern Gallery, Fringe Arts, Holburne Museum of Art, Michael Tippet Centre, University of Bath, Victoria Art Gallery. **BERE REGIS:** Cyril Wood Court. **BLANDFORD:** Bryanston Arts Centre, Forum Café, Forum Framers. **BOURNEMOUTH:** All Fired Up, Artcetera, Flux Art Supplies, Miramar Hotel, Pavilion Dance, Royal Bath Hotel, Russell-Cotes Museum & Art Gallery. **BOWER HINTON:** The Hollies Hotel. **BRADFORD ON AVON:** Wiltshire Music Centre. **BRIDGWATER:** Bridgwater Arts Centre, Clayhill Arts, Engine Room. **BRIDPORT:** Beach & Barnicott, Bridport Arts Centre, Bridport Old Books, Bridport Music, The Bull Hotel, Clocktower Music, Literary and Scientific Institute, Lyric Theatre, St Michael's Studios. **BRISTOL:** Bocabar, Bristol Fine Art, Centrespace, Colston Hall, Create Centre, Folk House, Jamaica Street Artists, Lime Tree Gallery, Bristol Old Vic, PRSC Gallery, RWA, Spike Island, St George's, Tobacco Factory, Trinity Centre, UWE, Watershed. **BROADWINDSOR:** Craft & Design Centre. **BRUTON:** Bruton Art Factory, Bruton Castle, At The Chapel, Hauser and Wirth. **BUDLEIGH SALTERTON:** Brook Gallery. **BURNHAM ON SEA:** Princess Theatre & Arts Centre, Seabreeze Gallery. **CASTLE CARY:** Bailey Hill Bookshop, Clerkenwell Fine Art, Trowbridge Gallery. **CHARD:** Art Café, Barleymow's, Hornsbury Mill Hotel. **CHEDDAR:** Sketch Café. **CHEDDON FITZPAINE:** Hestercombe Gallery. **CHRISTCHURCH:** Hatch Gallery, Hayloft Gallery, Red House Museum, Regent Centre. **CLEVEDON:** Fizz Gallery. **CONGRESBURY:** Church House Designs. **CORFE CASTLE:** Boilerhouse Gallery, Gallery 41, Morton House Hotel. **CORSHAM:** Pound Arts. **CREWKERNE:** Phoenix Books. **CROCKERTON:** Bull Mill Arts. **CROWCOMBE:** Halsway Manor. **CULLOMPTON:** Cullompton Community College. **CULMSTOCK:** The Strand Stores. **DEVIZES:** Bluestone Gallery, St John's Art & Deco, Wiltshire Museum, Wine Street Gallery. **DORCHESTER:** Artsreach, Dorchester Arts, Duke's, Dorset County Museum, Frank Herring & Sons, Gallery on The Square, The Little Keep. **EAST LAMBROOK:** East Lambrook Manor Gardens.

EXETER: Academy of Music, Boston Tea Party, The Cavern, Corn Exchange, Exeter School of Art, Phoenix Arts Centre, Royal Albert Memorial Museum, Southgate Gallery, Unearth. **FROME:** Black Swan Arts, Cheese and Grain, Fiat Lux, Hubnub Centre, Merlin Theatre, Mount, Rook Lane Arts. **GILLINGHAM:** Bowridge Gallery, The Idea Works, Slade Centre. **GLASTONBURY:** Abbey Muse Gallery, Bocabar, Glastonbury Galleries, Red Brick Building, Rural Life Museum. **HEMYOCK:** Healthy Living Centre. **HIGHCLIFFE:** In The Frame. **HOLTON HEATH:** Holton Lee. **HONITON:** The Beehive, Boston Tea Party, Hybrid Gallery, Strummer Pink, Thelma Hulbert Gallery. **ILMINSTER:** Dillington House, Ilminster Arts Centre, Millhouse. **LANGPORT:** 4 Every Cloud, Art Tea Zen, Shakespeare Glass, Somerset Art Works. **LANGTON MATRAVERS:** Burngate Stone Carving Centre. **LYME REGIS:** Blue Lias, Coombe Street Gallery, Fine Art Framing, Marine Theatre, Studio 19, Town Mill. **MARLBOROUGH:** Framemakers. **MARTOCK:** 303 Gallery, Martock Gallery. **MERE:** Beaumont Gallery. **MILDENHALL:** Rabley Contemporary Drawing Centre. **MILTON ABBAS:** Dorset Crafty Barn, Flux'n'Flame. **MINEHEAD:** Courtyard Framing, Leo Davey Gallery, Regal Theatre. **MORCOMBELAKE:** Artwave West. **MUCHELNEY:** John Leach Gallery. **NEW MILTON:** Forest Arts. **NORTH CURRY:** Community Café. **OTTERTON:** Otterton Mill. **POOLE:** Arts University Bournemouth, Bournemouth University Atrium Gallery, Guildhall Gallery, Josephine Wall Gallery, Lighthouse, The Gallery Upstairs, Poole Museum. **PORLOCK:** Churchgate Gallery, Melody Art. **PORTLAND:** B-Side Outpost, White Stones. **SALISBURY:** City Hall, Fisherton Mill, Framemakers, Noble Art Supplies, Salisbury Arts Centre, Salisbury Museum, Salisbury Playhouse, Studio 53, Wiltshire Gallery, Young Gallery. **SEATON:** Arts Café. **SEAVINGTON:** Village Shop. **SHAFTESBURY:** The Cygnet, Grosvenor Hotel, Salt of the Earth, Shaftesbury Arts Centre. **SHEPTON MALLET:** One Craft Gallery. **SHERBORNE:** Artslink, Jerram Gallery, New Digby Hall, Old Barn Framing Gallery, Winstone's. **SIDMOUTH:** East Devon Art Academy, Flo and Us, Kennaway House, Winstone's. **SOMERTON:** ACE Arts, Gifted Company & Gallery Coffee Shop. **SOUTH CADBURY:** Chapel Cross Tea Rooms. **SOUTH PETHERTON:** David Hall. **STALBRIDGE:** Dike

& Sons. **STOKE ST GREGORY:** Willows & Wetlands Centre. **STOURHEAD:** First View Gallery. **STREET:** Millfield School Atkinson Gallery, Strode Theatre. **STURMINSTER NEWTON:** The Exchange, Poet's Corner, Wessex Photographic. **SWANAGE:** Durlston Castle, L'Artishe Gallery, Little Green Gallery, Mowlem Theatre, Mulberry Bush Gallery, Purbeck New Wave Gallery, Quarr Gallery, Sansom Gallery. **TAUNTON:** Brewhouse Theatre, CIC CIC, Framers, Ginger Fig, Jane Amour, Mount Somerset Hotel, Queen's College, Tacchi-Morris Arts Centre, University Centre Somerset. **TINCLETON:** Tincleton Gallery. **TISBURY:** Messums Wiltshire. **TIVERTON:** Lantic Gallery. **TROWBRIDGE:** Arc Theatre, The Lamb, Trowbridge Arts. **VERWOOD:** The Hub. **WAREHAM:** Creative Gallery, Furzebrook Studios, Priory Hotel, Rex Cinema. **WATCHET:** Contains Art. **WELLINGTON:** Old Brick Workshop. **WELLS:** A2 Gallery, Andelli Art, Good Earth, Heritage Courtyard Studios, Somerset Guild of Craftsmen Gallery and Shop. **WEST BAY:** Sladers Yard. **WEST COKER:** Lanes, Old School Room. **WESTHAY:** Somerset Crafts. **WESTON-SUPER-MARE:** Frame Station, LT Gallery, Playhouse, Weston College. **WEYMOUTH:** Gallery on The Wey, Leighton Gallery, Weymouth College, Weymouth Pavilion. **WILLTON:** Breeze Art Gallery. **WIMBORNE:** Allendale House, Square Records, Walford Mill Craft Centre. **WOODBURY:** Woodbury Studio Gallery. **WORTON:** Old Mill Gallery. **WRINGTON:** Barleywood Studios. **YEovil:** Octagon Theatre. **YETMINSTER:** Old School Gallery. Plus selected TOURIST INFORMATION CENTRES and LIBRARIES throughout Wessex.

EVOLVER IS SPONSORED BY:
ACE Arts • Acoustic Distribution
The Arts Development Company
Atkinson Gallery • Aztec Media • B-Side
Black Swan Arts • Boilerhouse Gallery
Caldecourt Productions • The Creative Gallery
Dorchester Arts • Dorset Visual Arts
Gallery on the Square • Lighthouse • Mount
Octagon Theatre • PH Media • Sladers Yard
Somerset Art Works • Stephens & George
Thelma Hulbert Gallery • Tincleton Gallery
Walford Mill Crafts • Weymouth College
Wiltshire Creative



14.07.19 - 27.10.19

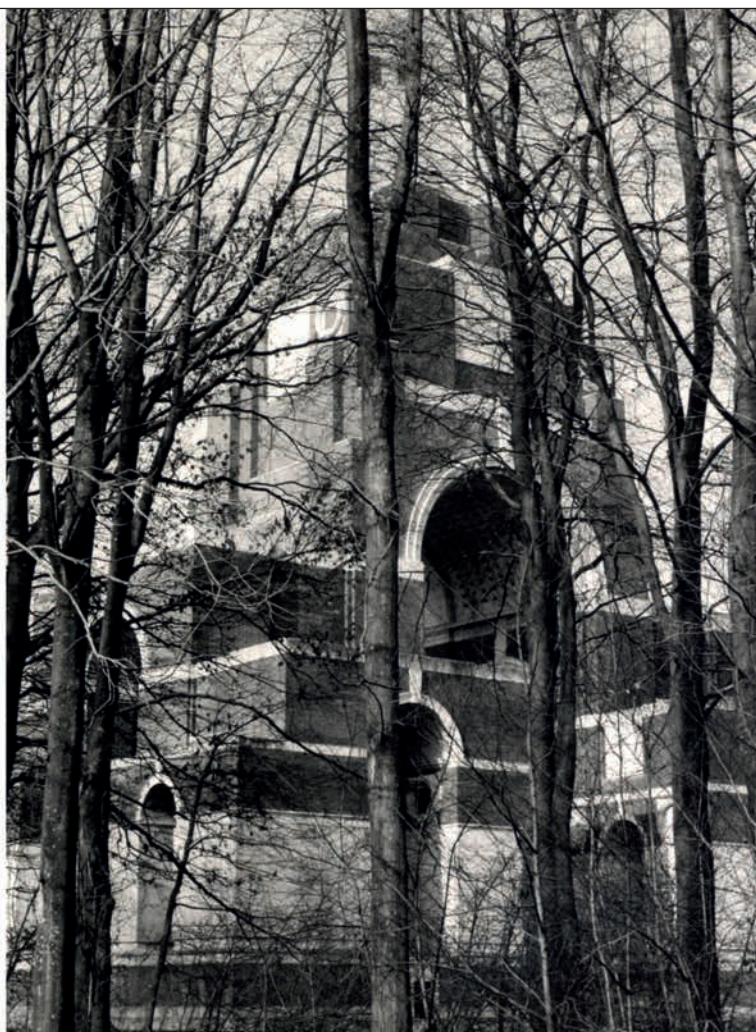
Alex Hartley, Liz Nicol, Oliver Sutherland

*Where Function Ends: Responses to
the architecture of Sir Edwin Lutyens*



hestercombe.com/gallery

Image credit: Liz Nicol, *Thiepval (detail)*, 2019, silver gelatin print



THE BOOK

Amanda Wallwork / Andy Fung / Angela Charles
Anna Morris / Bonnie Brown / Caroline Liddington
Carrie Mason / Chris Dunseath / David Atkins
Day Bowman / Debbie Lee / Ed Frith
Elaine Collett / Emma Davies / Fay Stevens
Faye Bowden / Fiona Campbell / Fiona Robinson
Fran Norton / Fran Quinlan / Frances Hatch
Helen Dean / Helen Simpson / Holly Yates
Ilona Skladzien / Jem Main / Jeremy Gardiner
Jindra Jehu / Julia Hutton / Katy Shepherd
Lisa Richardson / Martyn Brewster / Maureen Nathan
Paul Newman / Sarah Hough / Su Fahy

£15 from Dorset Visual Arts, featured artists and selected Wessex outlets

dorsetvisualarts.org

THE EXHIBITION

5 - 17 July at the Fine Foundation Gallery, Durlston Country Park, Swanage, BH19 2JL
10am - 5pm

Drawing on Dorset

DORSET VISUAL ARTS + EVOLVER



'Wild Swimming' by Emma Housley (2019)

Summer Show

24 June – 2 August 2019

Atkinson GALLERY



MILLFIELD

Millfield, Street, Somerset BA16 0YD • Monday - Saturday 9.30am - 5pm
www.atkinsongallery.co.uk • Tel: 01458 444322 / 444176

